

District Integrated Summary

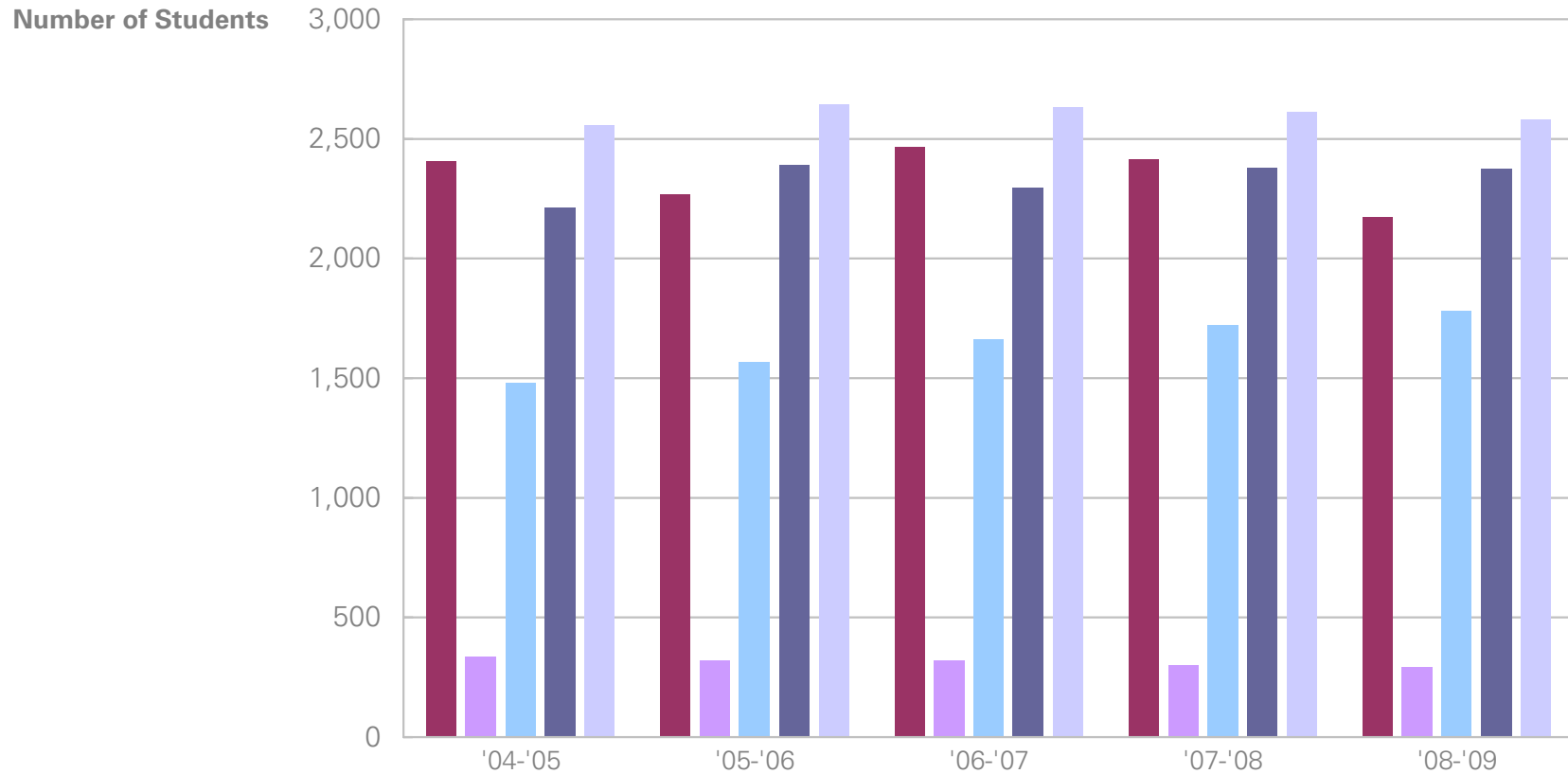
2008-2009

Archdiocese of Baltimore Education Office

Included in This Report:

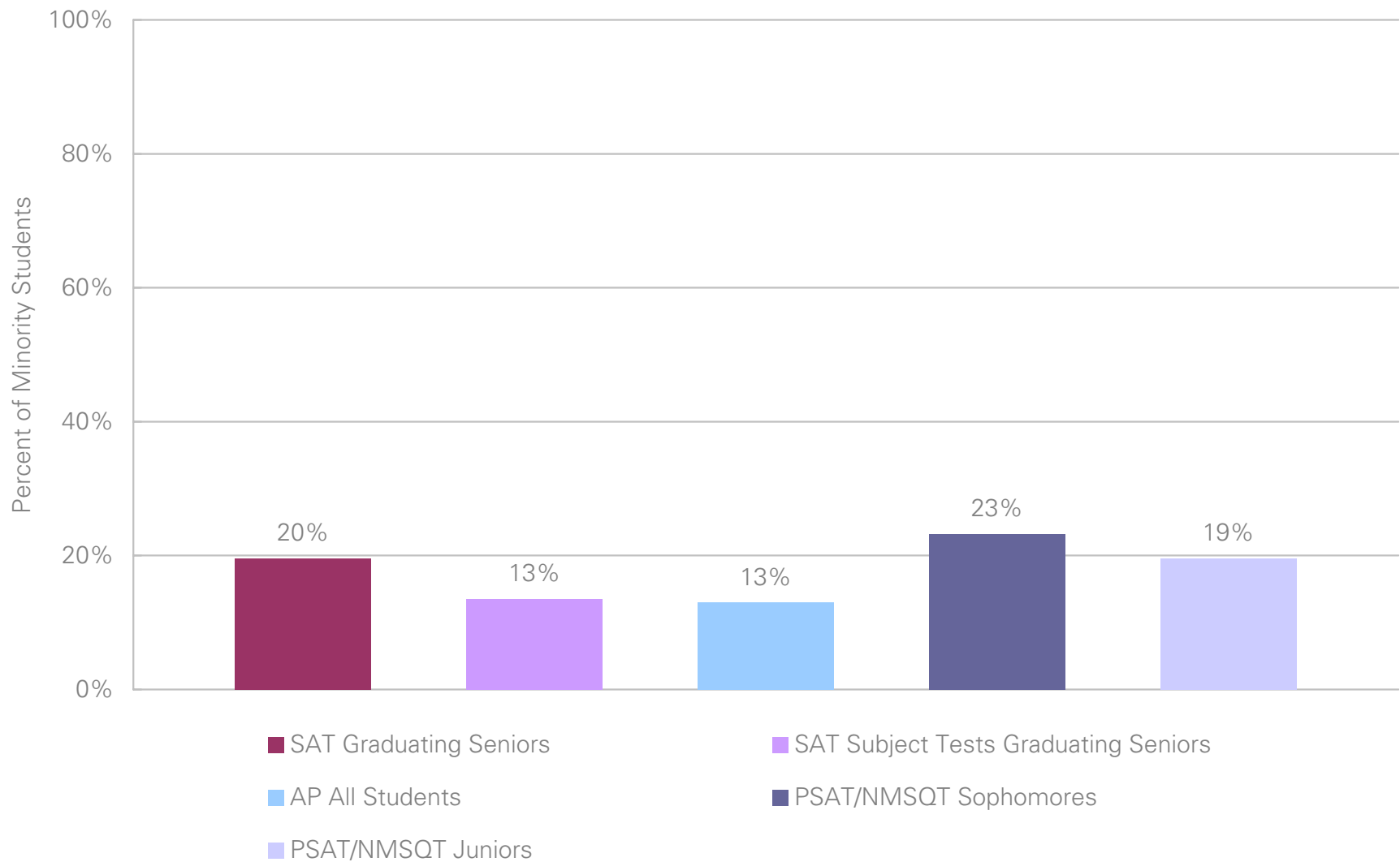
- SAT[®]
- SAT Subject Tests[™]
- Advanced Placement Program[®]
- PSAT/NMSQT[®]

OVERVIEW: Number of Students Taking SAT, SAT Subject Tests, AP and PSAT/NMSQT

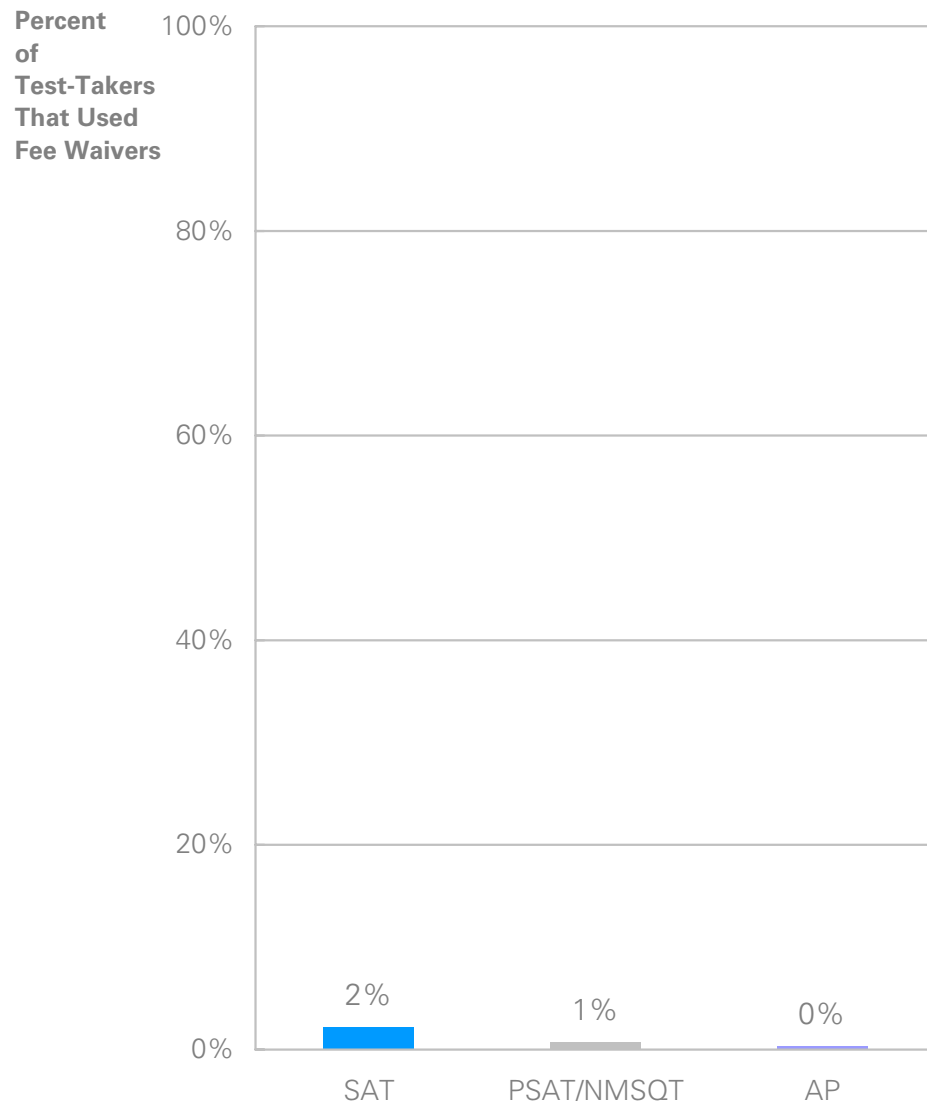
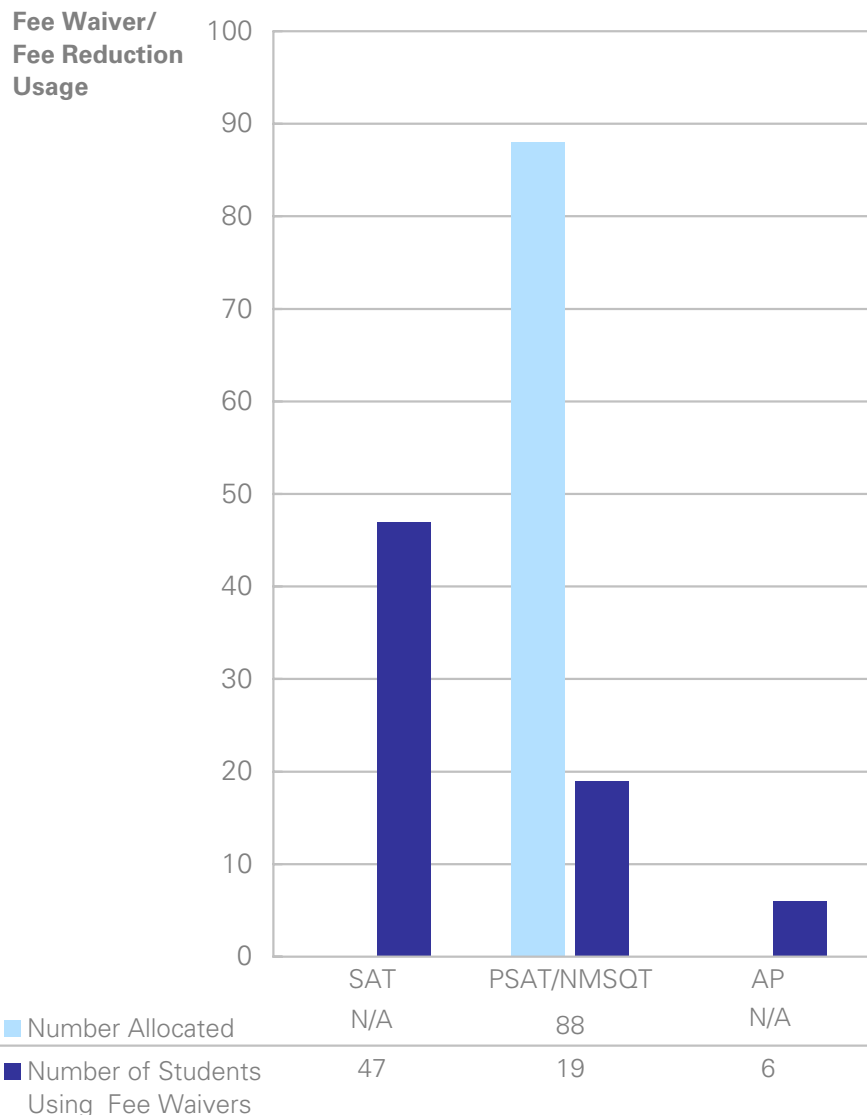


■ SAT Graduating Seniors	2,404	2,269	2,467	2,412	2,171
■ SAT Subject Tests Graduating Seniors	336	319	318	302	290
■ AP All Students	1,481	1,564	1,662	1,719	1,781
■ PSAT/NMSQT Sophomores	2,211	2,391	2,293	2,377	2,375
■ PSAT/NMSQT Juniors	2,556	2,644	2,632	2,611	2,580

OVERVIEW: Percent of Test-Takers Self-Reported as Minority Students



OVERVIEW: Fee Waivers/Fee Reduction for SAT, AP and PSAT/NMSQT



Note: SAT and AP fee reduction allocation numbers are not available. The number of PSAT/NMSQT fee waivers reported reflects those students whose test fees were covered by a fee waiver or an agreement with the state or district designed to support students underrepresented in college-going populations. As part of such an agreement, the state or districts paid the test fees for juniors at a reduced cost.

District Integrated Summary 2008-2009

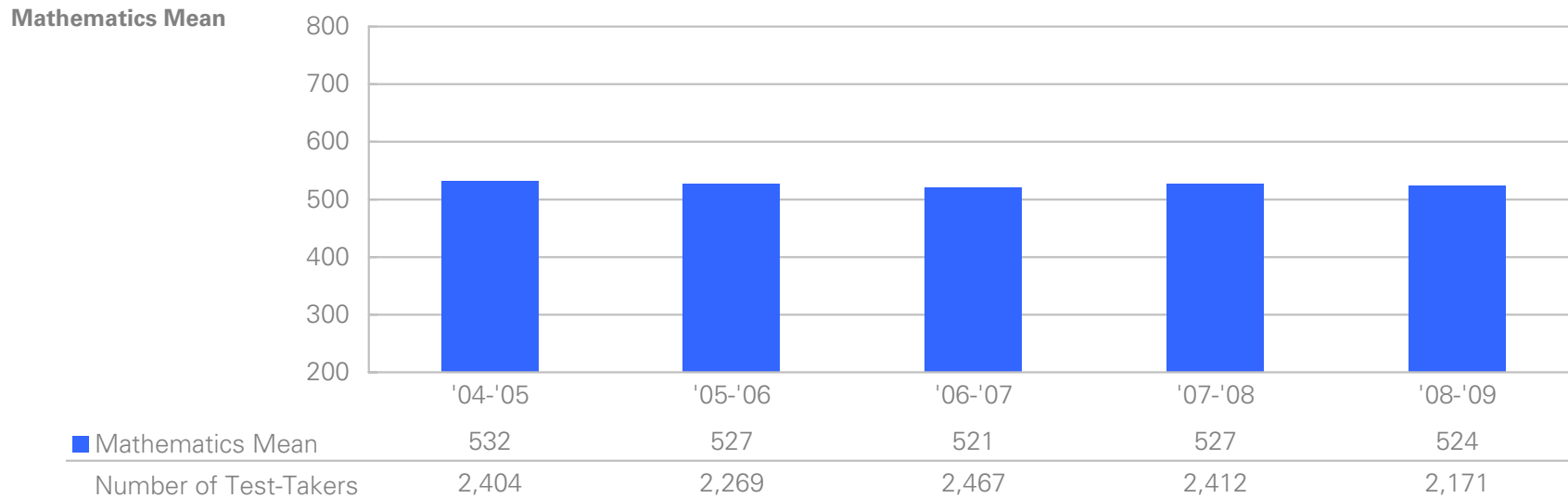
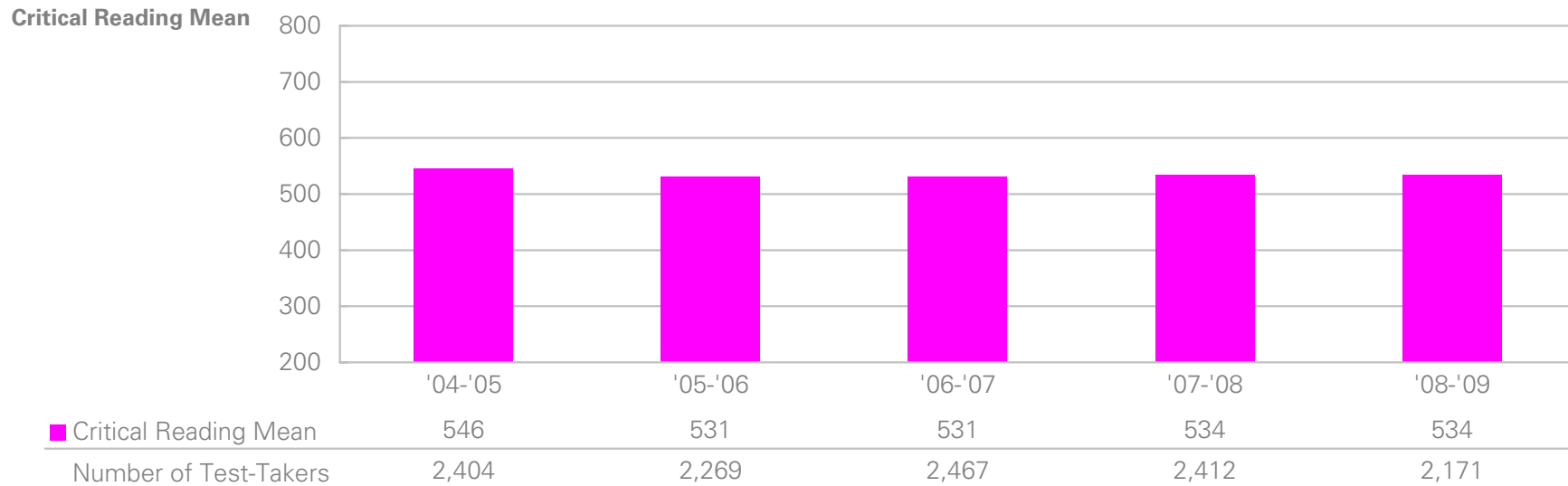
Archdiocese of Baltimore Education Office



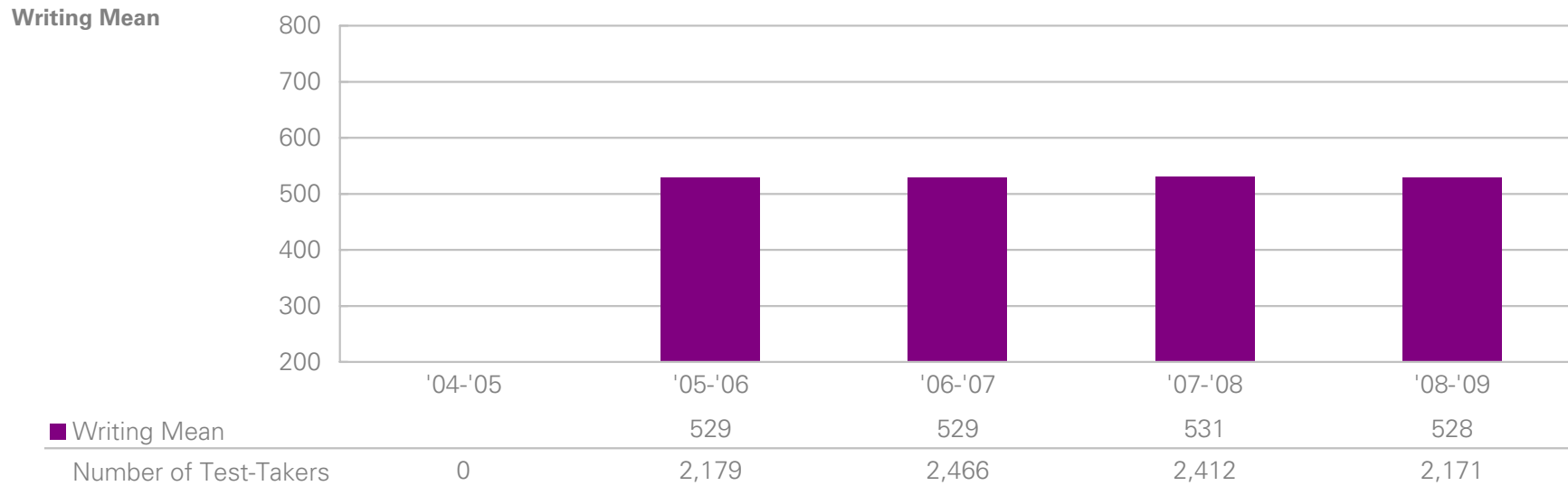
SAT: Performance and Participation Overview

	Archdiocese of Baltimore Education Office					Maryland- Public Schools					Total Group - Public Schools				
	# of Test-Takers	% of Total	Mean Critical Reading	Mean Mathematics	Mean Writing	# of Test-Takers	% of Total	Mean Critical Reading	Mean Mathematics	Mean Writing	# of Test-Takers	% of Total	Mean Critical Reading	Mean Mathematics	Mean Writing
All															
Total	2,171	100.0%	534	524	528	33,696	100.0%	492	498	488	1,093,374	100.0%	496	510	487
Change from last year	-10.0%		0	-3	-3	-8.3%		+2	+1	-1	-5.7%		-1	0	-1
Gender															
Female	1,008	46.4%	539	508	546	18,424	54.7%	490	483	494	592,367	54.2%	494	494	492
Change from last year	-12.7%		+2	-5	+2	-8.2%		+2	+1	-2	-6.0%		-1	-1	-2
Male	1,163	53.6%	529	538	512	15,272	45.3%	494	516	480	501,007	45.8%	500	528	480
Change from last year	-7.6%		-1	-3	-6	-8.1%		+1	0	-1	-5.0%		0	0	-2
Ethnic Group															
American Indian	9	0.4%	449	413	439	148	0.4%	467	457	460	6,847	0.6%	481	487	462
Change from last year	0.0%		-34	-59	-4	-14.0%		-2	-18	-1	-11.0%		0	0	-4
Asian	48	2.2%	534	555	542	2,725	8.1%	544	597	551	103,089	9.4%	516	573	517
Change from last year	-5.9%		-34	-17	-13	-7.8%		+13	+12	+12	-2.3%		+4	+4	+5
Black	258	11.9%	444	416	435	10,980	32.6%	421	411	417	146,505	13.4%	425	423	416
Change from last year	-2.3%		-8	-10	-11	-1.0%		+3	+3	-2	+0.5%		0	-1	-3
Hispanic Overall	72	3.3%	546	525	537	1,887	5.6%	474	471	469	158,130	14.5%	448	457	441
Change from last year	+14.3%		+3	-7	-10	-4.6%		+5	-3	+1	+3.4%		-1	0	-1
<i>Mexican American</i>	16	0.7%	524	526	529	209	0.6%	494	487	480	64,798	5.9%	449	461	442
Change from last year	+166.7%		-49	+18	-23	-8.7%		+25	+17	+18	+8.5%		0	0	-1
<i>Puerto Rican</i>	12	0.6%	559	533	548	188	0.6%	495	494	491	15,857	1.5%	447	448	438
Change from last year	-14.3%		+8	-31	-20	-16.1%		-3	0	-6	-0.7%		-5	-3	-3
<i>Other Hispanic</i>	44	2.0%	551	523	537	1,490	4.4%	468	466	465	77,475	7.1%	447	455	440
Change from last year	+2.3%		+16	-2	-2	-2.2%		+4	-5	+1	+0.3%		-1	0	-1
White	1,708	78.7%	547	540	542	15,832	47.0%	536	549	531	609,843	55.8%	524	536	512
Change from last year	-11.1%		+3	-1	0	-11.0%		+1	+3	-1	-7.7%		0	+1	-1
Other	38	1.8%	532	527	517	919	2.7%	506	502	499	31,993	2.9%	494	501	487
Change from last year	+2.7%		-20	-7	-29	-15.1%		+17	+12	+12	-8.5%		0	0	-1
No Response	38	1.8%	528	518	524	1,205	3.6%	460	448	449	36,967	3.4%	481	482	466
Change from last year	-42.4%		+9	+14	+1	-28.1%		+12	+9	+4	-28.2%		+7	+7	+4

SAT: Performance and Number of Test-Takers (Part 1 of 2)

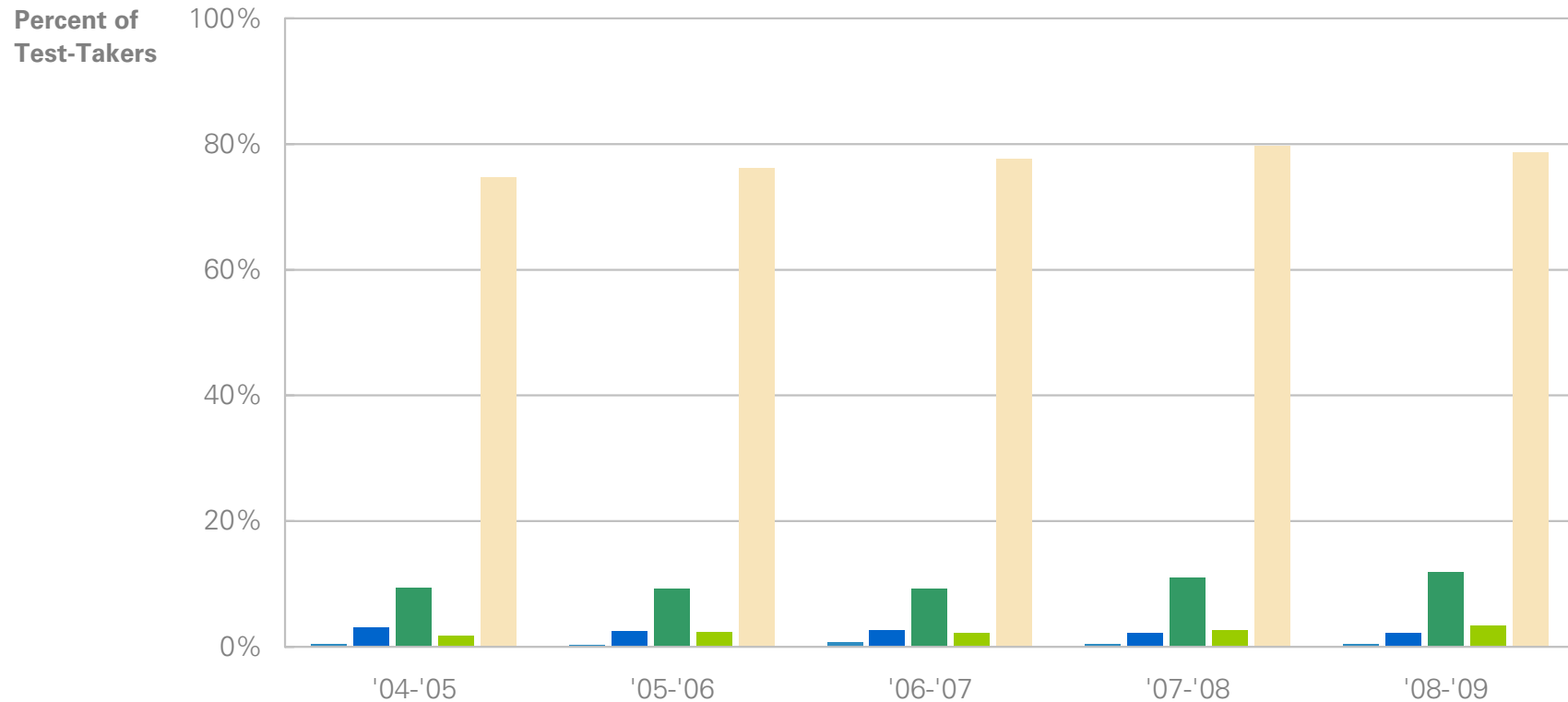


SAT: Performance and Number of Test-Takers (Part 2 of 2)



Note: Writing mean scores are based on students who took the exam beginning March 2005, when the writing section was introduced. 2009 is the first year in which all graduating seniors took the SAT March 2005 or later and have writing scores.

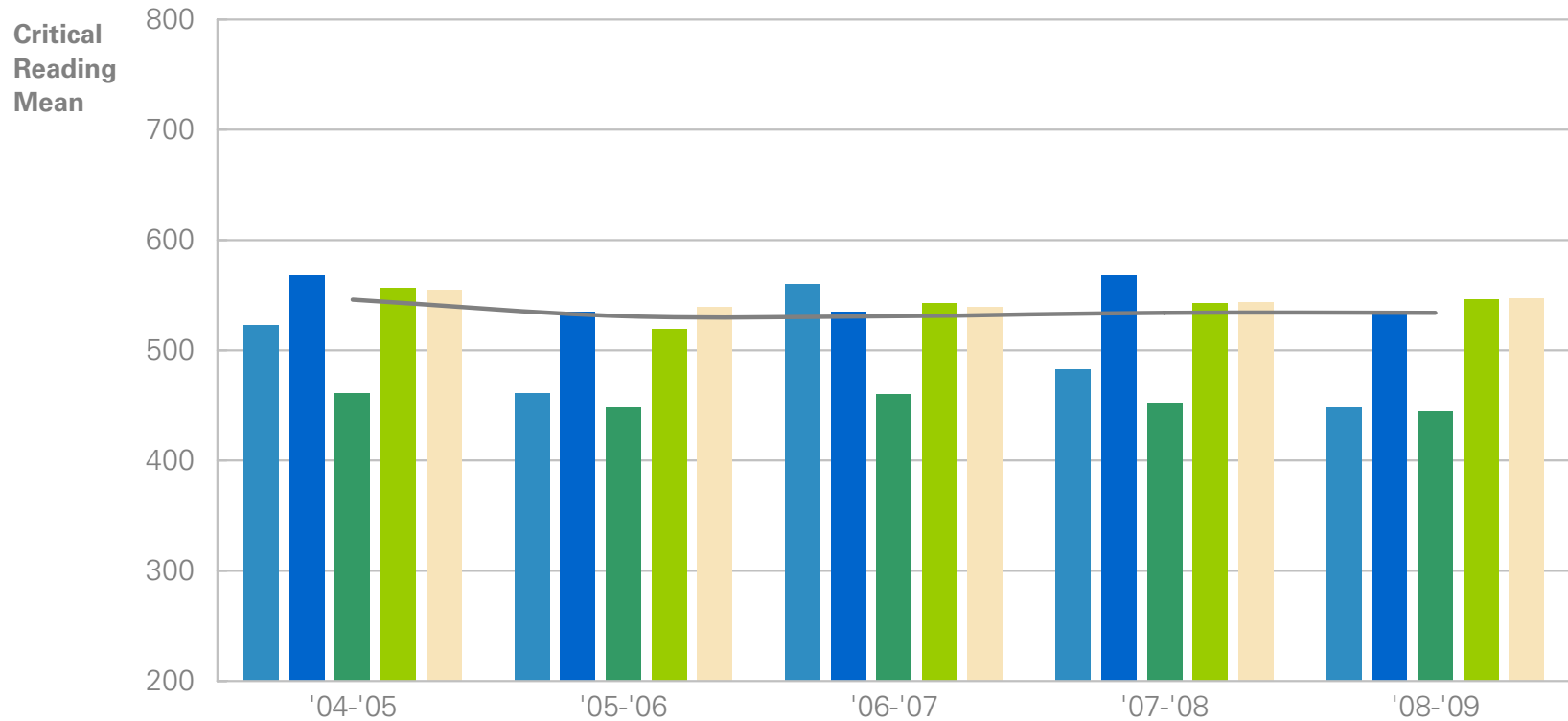
SAT: Participation by Ethnic Group



Number of Students Taking SAT:

American Indian	10	7	16	9	9
Asian	74	56	65	51	48
Black	227	211	229	264	258
Hispanic	42	52	53	63	72
White	1,797	1,730	1,916	1,922	1,708
Other	61	54	56	37	38
No Response	193	159	132	66	38
Total	2,404	2,269	2,467	2,412	2,171

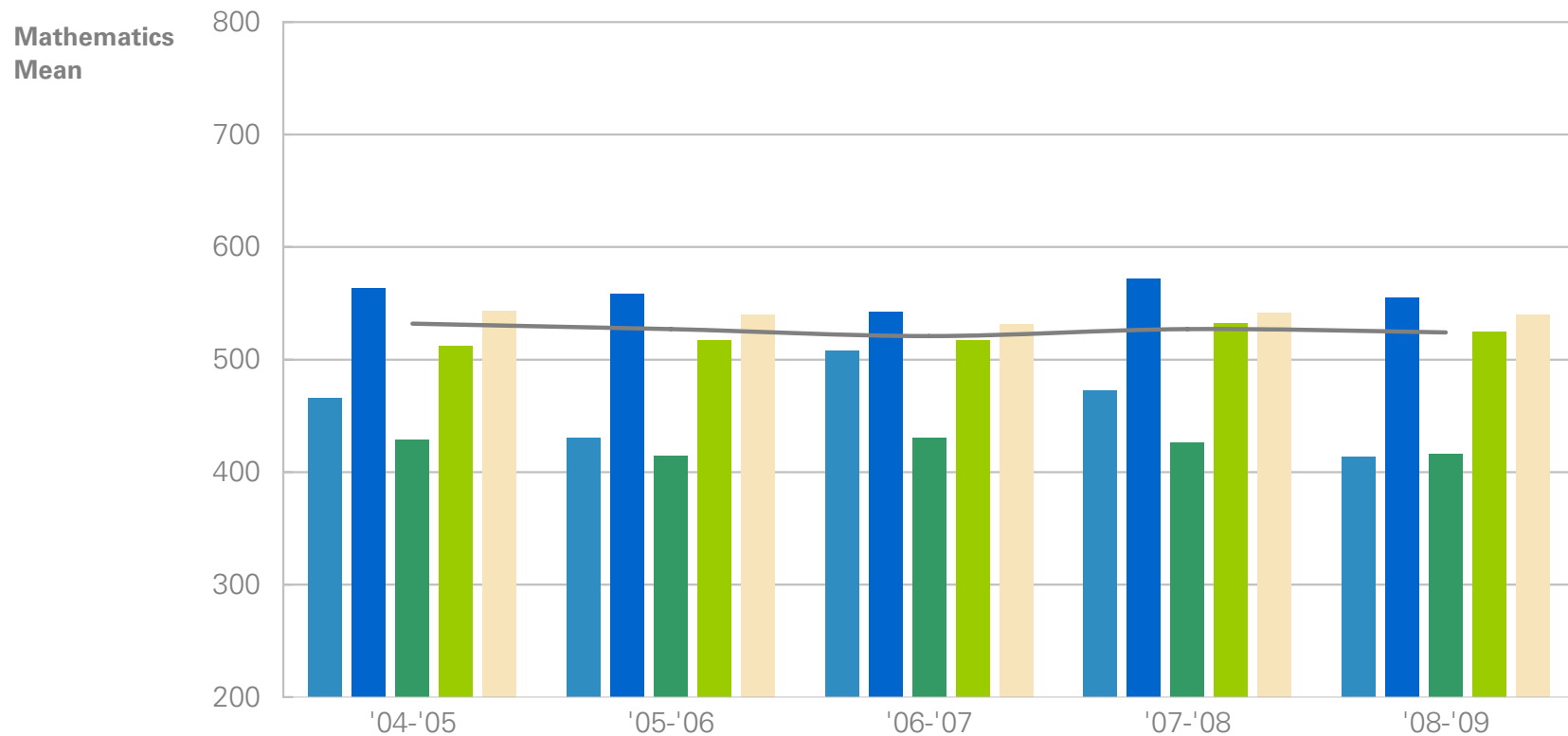
SAT: Critical Reading Performance by Ethnic Group



	'04-'05	'05-'06	'06-'07	'07-'08	'08-'09
American Indian	523	461	560	483	449
Asian	568	535	535	568	534
Black	461	448	460	452	444
Hispanic	557	519	543	543	546
White	555	539	539	544	547
Overall*	546	531	531	534	534

*Represents the mean score for all students, including those who responded "Other" or "No Response." Please see the Self-Reported Ethnic Group Data Note for further details.

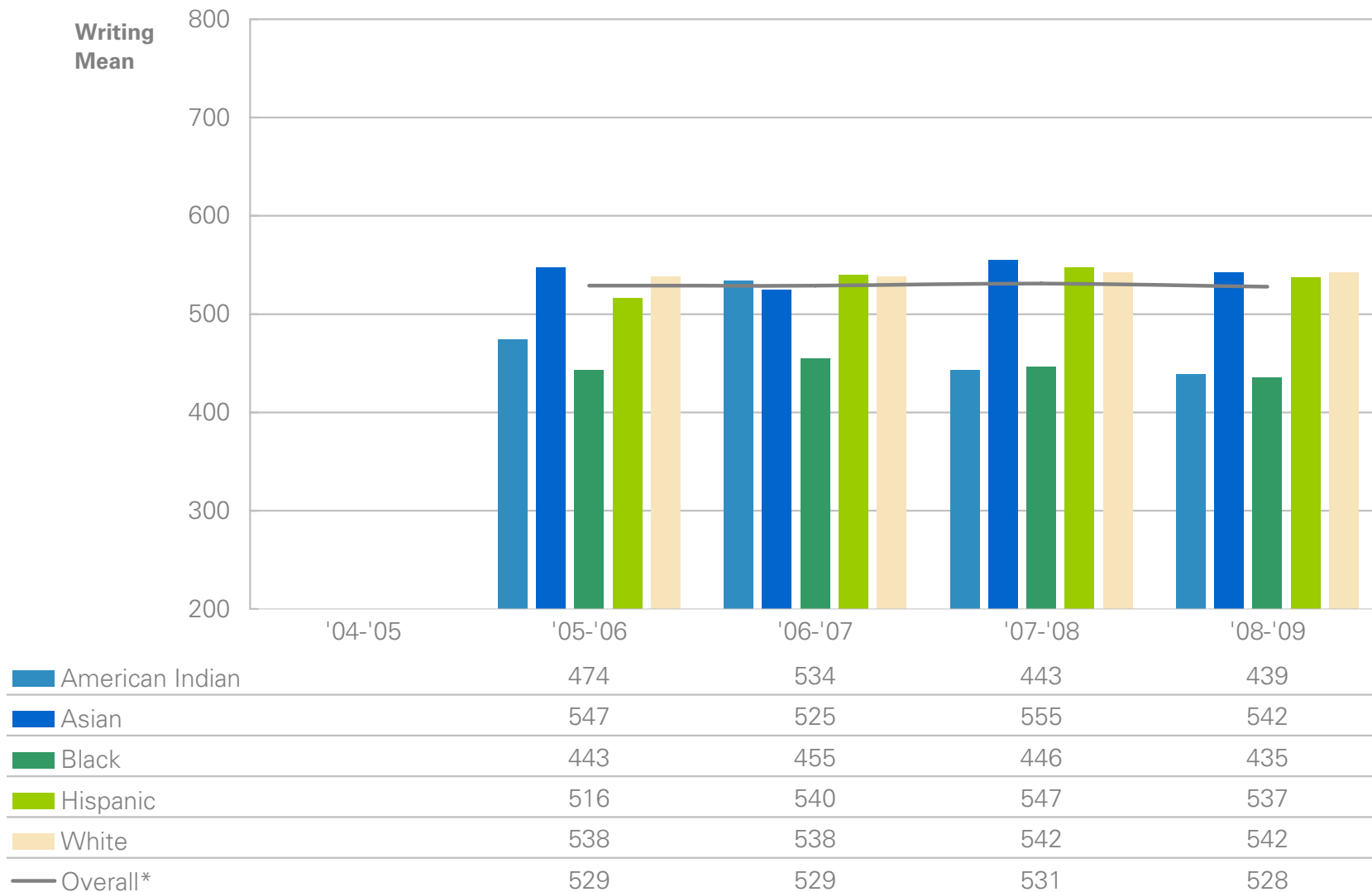
SAT: Mathematics Performance by Ethnic Group



American Indian	466	430	508	472	413
Asian	563	558	542	572	555
Black	429	414	430	426	416
Hispanic	512	517	517	532	525
White	543	540	531	541	540
Overall*	532	527	521	527	524

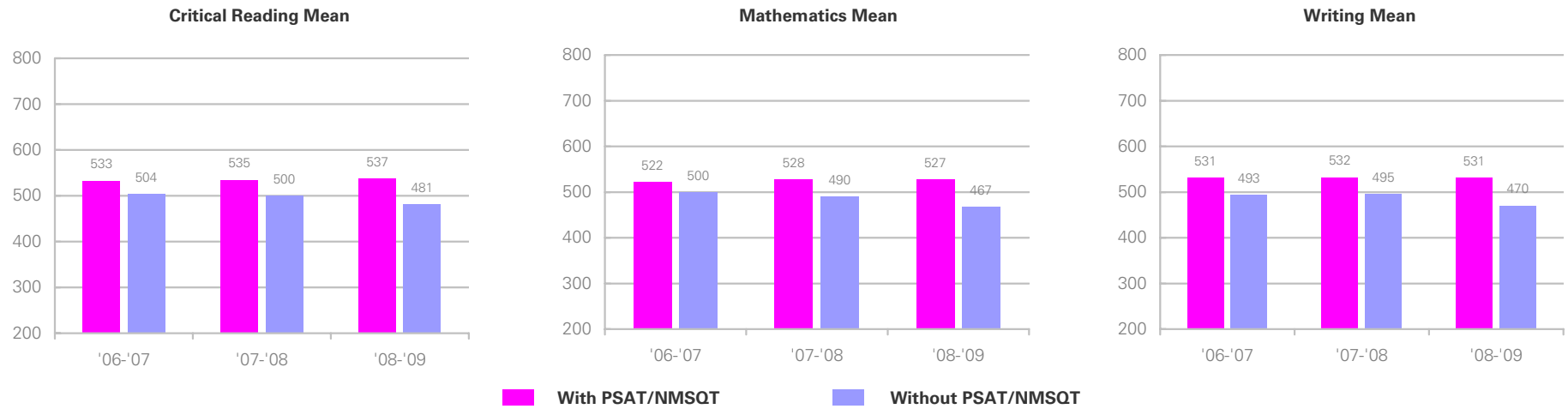
*Represents the mean score for all students, including those who responded "Other" or "No Response." Please see the Self-Reported Ethnic Group Data Note for further details.

SAT: Writing Performance by Ethnic Group



*Represents the mean score for all students, including those who responded "Other" or "No Response." Please see the Self-Reported Ethnic Group Data Note for further details.

SAT: Performance Based on Self-Reported PSAT/NMSQT Participation



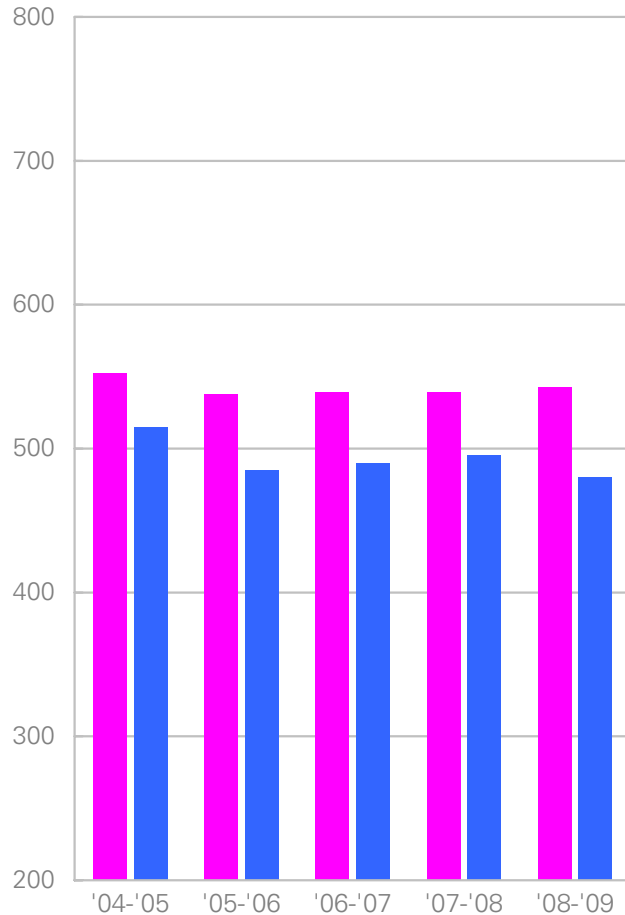
Graduating Class of 2009, Students Taking:	Number of Test-Takers	Critical Reading Mean	Mathematics Mean	Writing Mean
SAT (All Students)	2,171	534	524	528
SAT with PSAT/NMSQT (Junior)	524	512	515	502
SAT with PSAT/NMSQT (Sophomore or younger)	293	521	508	510
SAT with PSAT/NMSQT (Junior and Sophomore or younger)	1,122	553	537	550
SAT without PSAT/NMSQT	54	481	467	470
SAT with no response to taking the PSAT/NMSQT	178	512	511	511

Graduating Class of 2008, Students Taking:	Number of Test-Takers	Critical Reading Mean	Mathematics Mean	Writing Mean
SAT (All Students)	2,412	534	527	531
SAT with PSAT/NMSQT (Junior)	547	517	517	515
SAT with PSAT/NMSQT (Sophomore or younger)	243	509	503	507
SAT with PSAT/NMSQT (Junior and Sophomore or younger)	1,299	547	537	544
SAT without PSAT/NMSQT	41	500	490	495
SAT with no response to taking the PSAT/NMSQT	282	530	528	525

Graduating Class of 2007, Students Taking:	Number of Test-Takers	Critical Reading Mean	Mathematics Mean	Writing Mean
SAT (All Students)	2,467	531	521	529
SAT with PSAT/NMSQT (Junior)	681	508	496	504
SAT with PSAT/NMSQT (Sophomore or younger)	253	522	514	518
SAT with PSAT/NMSQT (Junior and Sophomore or younger)	1,162	551	539	550
SAT without PSAT/NMSQT	67	504	500	493
SAT with no response to taking the PSAT/NMSQT	304	524	517	520

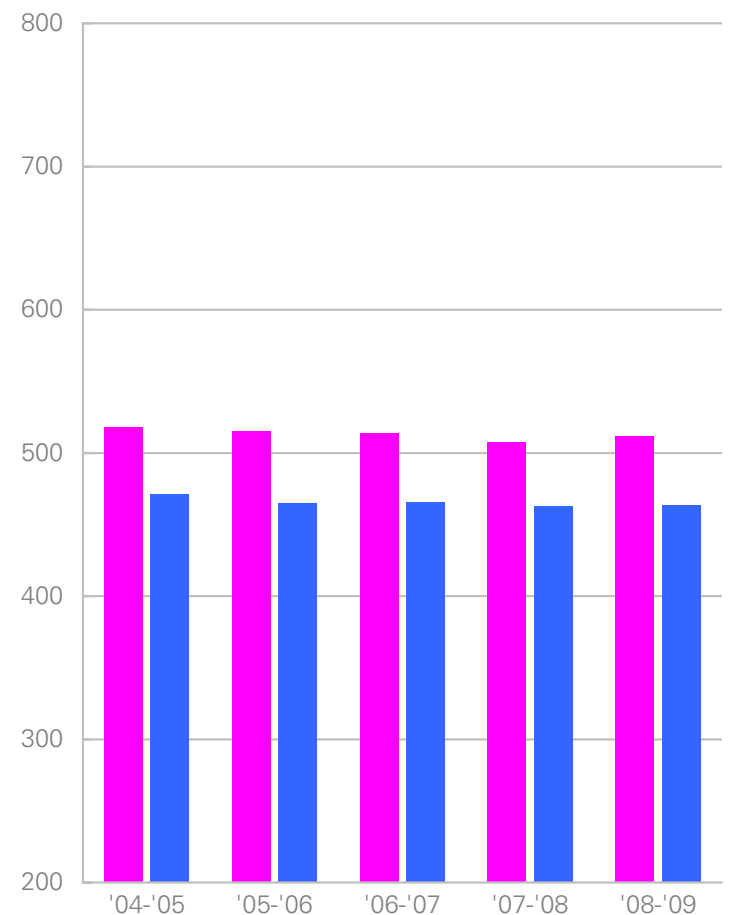
SAT: Critical Reading Performance by Trends in Academic Preparation

Archdiocese of Baltimore Education Office



Core Mean	552	538	539	539	543
Non-Core Mean	515	485	490	495	480
Core Test-Takers	1,740	1,621	1,850	1,832	1,709
Non-Core Test-Takers	265	284	270	222	238

Total Group - Public Schools

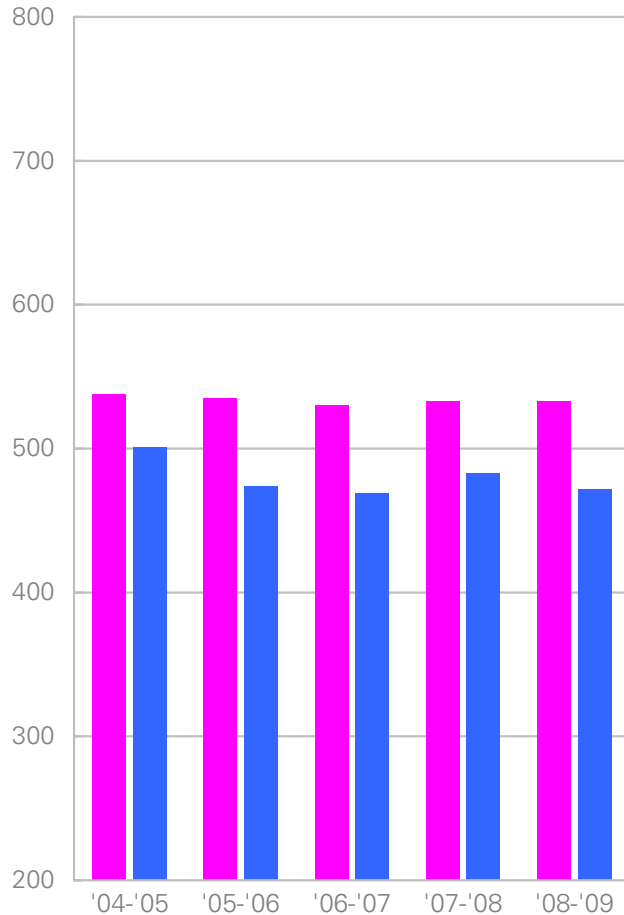


Core Mean	518	515	514	508	512
Non-Core Mean	471	465	466	463	464
Core Test-Takers	700,739	707,018	763,416	724,162	734,787
Non-Core Test-Takers	203,358	213,241	217,537	188,951	186,285

Note: Please see the Data Notes for definitions of Core and Non-Core.

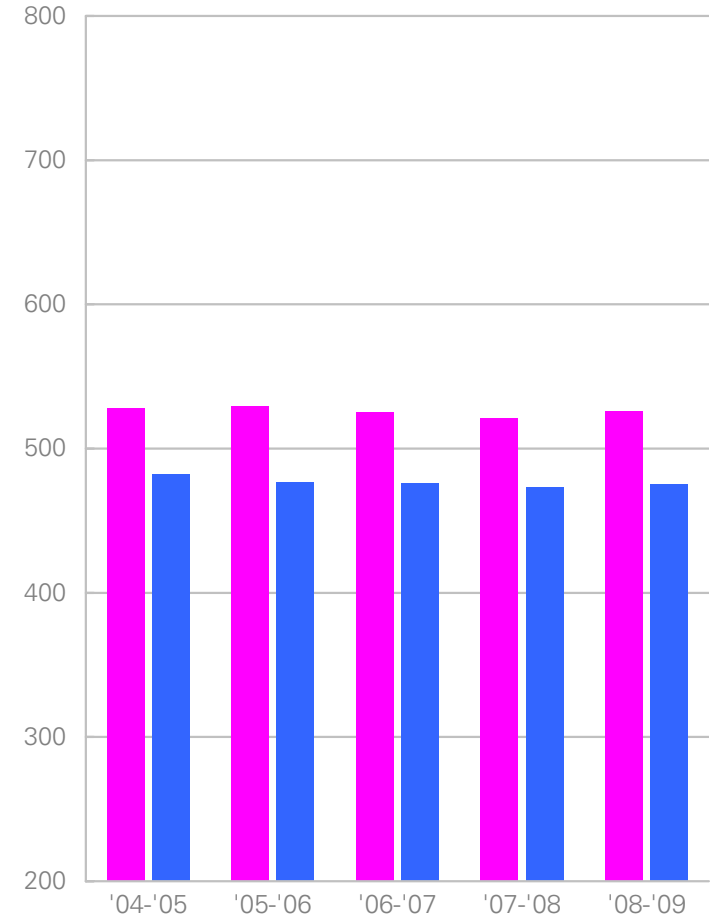
SAT: Mathematics Performance by Trends in Academic Preparation

Archdiocese of Baltimore Education Office



Core Mean	538	535	530	533	533
Non-Core Mean	501	474	469	483	472
Core Test-Takers	1,740	1,621	1,850	1,832	1,709
Non-Core Test-Takers	265	284	270	222	238

Total Group - Public Schools

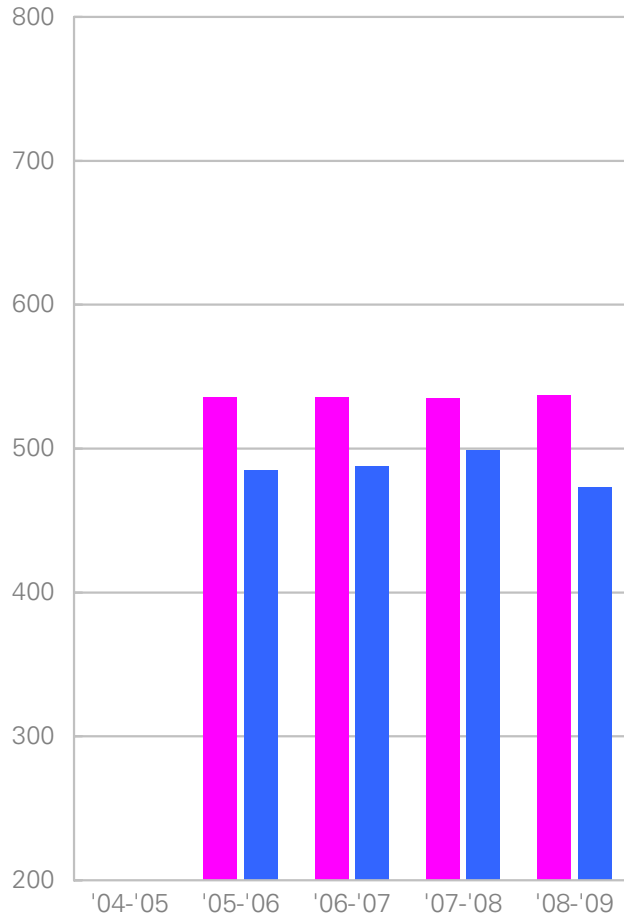


Core Mean	528	529	525	521	526
Non-Core Mean	482	477	476	473	475
Core Test-Takers	700,739	707,018	763,416	724,162	734,787
Non-Core Test-Takers	203,358	213,241	217,537	188,951	186,285

Note: Please see the Data Notes for definitions of Core and Non-Core.

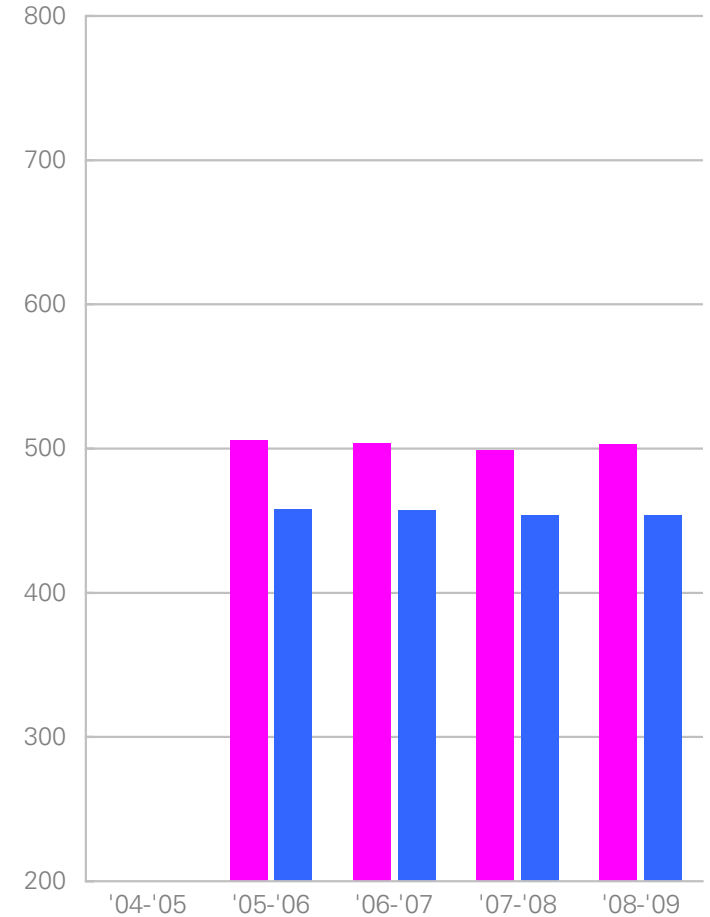
SAT: Writing Performance by Trends in Academic Preparation

Archdiocese of Baltimore Education Office



Core Mean	536	536	535	537
Non-Core Mean	485	488	499	473
Core Test-Takers	1,556	1,849	1,832	1,709
Non-Core Test-Takers	270	270	222	238

Total Group - Public Schools



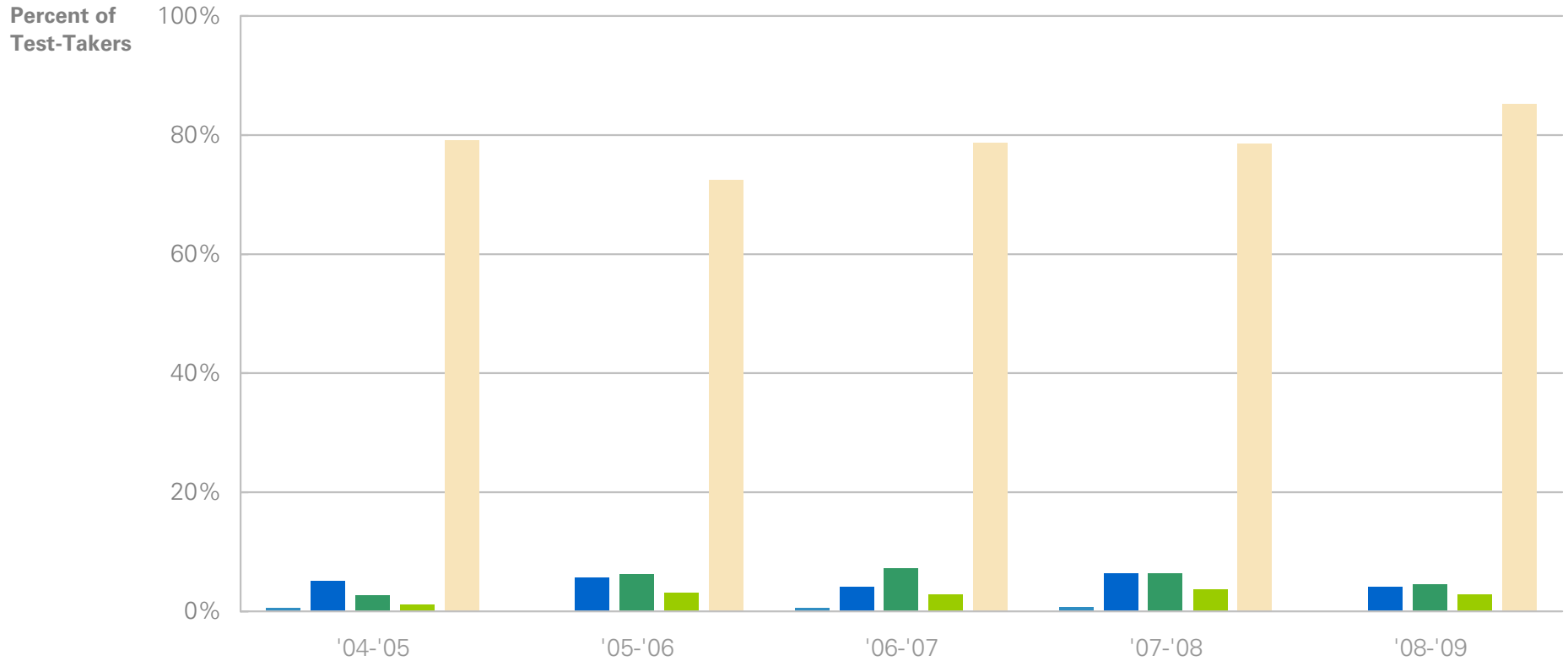
Core Mean	506	504	499	503
Non-Core Mean	458	457	454	454
Core Test-Takers	674,421	762,757	724,154	734,787
Non-Core Test-Takers	200,564	217,222	188,951	186,285

Note: Please see the Data Notes for definitions of Core and Non-Core.

SAT Subject Tests: Participation Overview

		Archdiocese of Baltimore Education Office			Maryland- Public Schools			Total Group - Public Schools		
		# of Test-Takers	% of Total	# of Tests Taken	# of Test-Takers	% of Total	# of Tests Taken	# of Test-Takers	% of Total	# of Tests Taken
All	Total	290	100.0%	748	4,234	100.0%	10,526	205,396	100.0%	523,465
	Change from last year	-4.0%		-2.0%	+0.6%		-0.2%	-0.2%		-0.7%
Gender	Female	140	48.3%	365	2,289	54.1%	5,672	113,254	55.1%	288,763
	Change from last year	-16.2%		-12.0%	-1.5%		-2.5%	-0.5%		-1.0%
Gender	Male	150	51.7%	383	1,945	45.9%	4,854	92,142	44.9%	234,702
	Change from last year	+11.1%		+10.1%	+3.4%		+2.6%	+0.2%		-0.3%
Ethnic Group	American Indian	0	0.0%	0	10	0.2%	25	899	0.4%	2,268
	Change from last year	-		-	-16.7%		-10.7%	-4.7%		-3.5%
Ethnic Group	Asian	12	4.1%	38	1,053	24.9%	2,762	49,553	24.1%	133,003
	Change from last year	-36.8%		-24.0%	+7.6%		+5.0%	+1.2%		-0.2%
Ethnic Group	Black	13	4.5%	33	592	14.0%	1,485	12,013	5.8%	30,018
	Change from last year	-31.6%		-31.3%	+13.0%		+11.7%	+7.1%		+6.4%
Ethnic Group	Hispanic Overall	8	2.8%	19	196	4.6%	496	32,361	15.8%	85,604
	Change from last year	-27.3%		-32.1%	-5.8%		-5.9%	+10.4%		+11.0%
Ethnic Group	<i>Mexican American</i>	1	0.3%	2	23	0.5%	56	17,915	8.7%	47,978
	Change from last year	0.0%		-33.3%	+9.5%		+5.7%	+11.4%		+11.4%
Ethnic Group	<i>Puerto Rican</i>	2	0.7%	5	19	0.4%	50	1,320	0.6%	3,206
	Change from last year	-33.3%		-44.4%	-34.5%		-35.1%	+1.3%		+2.2%
Ethnic Group	<i>Other Hispanic</i>	5	1.7%	12	154	3.6%	390	13,126	6.4%	34,420
	Change from last year	-28.6%		-25.0%	-2.5%		-1.8%	+10.1%		+11.2%
Ethnic Group	White	247	85.2%	630	2,075	49.0%	4,984	95,783	46.6%	234,962
	Change from last year	+4.2%		+5.5%	-5.7%		-6.8%	-3.3%		-3.9%
Ethnic Group	Other	6	2.1%	14	164	3.9%	411	7,971	3.9%	20,434
	Change from last year	+20.0%		0.0%	+8.6%		+12.9%	-4.0%		-5.0%
Ethnic Group	No Response	4	1.4%	14	144	3.4%	363	6,816	3.3%	17,176
	Change from last year	-55.6%		-33.3%	+9.1%		+13.1%	-15.8%		-15.2%

SAT Subject Tests: Percent Participation by Ethnic Group



Number of Students Taking SAT Subject Tests:

American Indian	2	0	2	2	0
Asian	17	18	13	19	12
Black	9	20	23	19	13
Hispanic	4	10	9	11	8
White	266	231	250	237	247
Other	10	6	8	5	6
No Response	28	34	13	9	4
Total	336	319	318	302	290

SAT Subject Tests: Subject Tests Participation and Performance

	'07-'08			'08-'09		
	# of Tests Taken	% of Total	Mean	# of Tests Taken	% of Total	Mean
Total Tests Taken	763	100%		748	100%	
Chemistry	45	6%	622	51	7%	641
Chinese with Listening	0	0%		0	0%	
Ecological Biology	19	2%	579	15	2%	625
French	17	2%	586	13	2%	555
French with Listening	0	0%		0	0%	
German	1	0%		1	0%	
German with Listening	0	0%		1	0%	
Italian	0	0%		0	0%	
Japanese with Listening	2	0%		1	0%	
Korean with Listening	0	0%		0	0%	
Latin	9	1%	568	7	1%	591
Literature	143	19%	634	141	19%	642
Math Level I (M1)	160	21%	631	132	18%	628
Math Level II (M2)	111	15%	661	114	15%	680
Modern Hebrew	0	0%		0	0%	
Molecular Biology	21	3%	624	27	4%	630
Physics	33	4%	647	33	4%	682
Spanish	44	6%	612	54	7%	619
Spanish with Listening	6	1%	620	6	1%	560
U.S. History	146	19%	646	146	20%	646
World History	6	1%	625	6	1%	610

AP: Performance and Participation Overview

		Archdiocese of Baltimore Education Office				Maryland- Public Schools				Total Group - Public Schools			
		# of Test-Takers	% of Total	# of Exams Taken	# of Grades 3-5	# of Test-Takers	% of Total	# of Exams Taken	# of Grades 3-5	# of Test-Takers	% of Total	# of Exams Taken	# of Grades 3-5
All	Total	1,781	100.0%	3,202	2,328	45,942	100.0%	85,237	52,154	1,448,982	100.0%	2,495,252	1,413,976
	Change from last year	+3.6%		+5.6%	+9.5%	+6.7%		+7.6%	+9.6%	+7.5%		+7.4%	+9.4%
Gender	Female	880	49.4%	1,513	1,074	26,149	56.9%	47,330	27,171	821,261	56.7%	1,383,267	737,840
	Change from last year	+5.0%		+1.0%	+5.3%	+6.1%		+6.6%	+7.9%	+7.1%		+7.0%	+8.7%
Gender	Male	901	50.6%	1,689	1,254	19,793	43.1%	37,907	24,983	627,721	43.3%	1,111,985	676,136
	Change from last year	+2.3%		+10.0%	+13.4%	+7.4%		+9.0%	+11.6%	+8.0%		+7.9%	+10.2%
Ethnic Group	American Indian	3	0.2%	4	-	179	0.4%	300	146	7,643	0.5%	11,932	5,213
	Change from last year	-25.0%		-33.3%	-	+20.1%		+19.0%	+24.8%	+9.8%		+9.7%	+15.3%
Ethnic Group	Asian	63	3.5%	126	94	5,733	12.5%	13,259	9,587	170,512	11.8%	353,602	230,456
	Change from last year	+16.7%		+16.7%	+38.2%	+8.2%		+11.1%	+14.0%	+7.9%		+8.3%	+11.3%
Ethnic Group	Black	75	4.2%	118	76	8,095	17.6%	12,745	3,612	113,928	7.9%	172,773	43,742
	Change from last year	+15.4%		+11.3%	+55.1%	+11.3%		+11.8%	+16.4%	+13.2%		+13.9%	+19.4%
Ethnic Group	Hispanic Overall	55	3.1%	92	59	3,026	6.6%	5,119	2,718	219,080	15.1%	353,544	145,835
	Change from last year	+22.2%		+16.5%	+15.7%	+11.4%		+10.9%	+7.8%	+13.6%		+13.7%	+15.0%
Ethnic Group	<i>Mexican American</i>	9	0.5%	13	8	332	0.7%	568	316	107,683	7.4%	173,477	69,928
	Change from last year	+80.0%		+44.4%	+60.0%	+14.1%		+15.0%	+29.0%	+13.5%		+14.0%	+15.6%
Ethnic Group	<i>Puerto Rican</i>	4	0.2%	10	-	213	0.5%	396	212	12,738	0.9%	19,953	8,245
	Change from last year	-50.0%		-37.5%	-	-6.6%		-2.9%	-8.6%	+10.1%		+11.6%	+15.7%
Ethnic Group	<i>Other Hispanic</i>	42	2.4%	69	41	2,481	5.4%	4,155	2,190	98,659	6.8%	160,114	67,662
	Change from last year	+31.3%		+27.8%	+20.6%	+12.9%		+11.8%	+7.1%	+14.2%		+13.7%	+14.3%
Ethnic Group	White	1,511	84.8%	2,721	1,986	25,914	56.4%	48,512	33,113	847,064	58.5%	1,448,603	904,703
	Change from last year	+1.3%		+3.9%	+6.3%	+4.7%		+5.8%	+8.7%	+4.5%		+4.6%	+7.2%
Ethnic Group	Other	35	2.0%	69	48	1,610	3.5%	2,986	1,685	49,991	3.5%	87,911	48,643
	Change from last year	+12.9%		+21.1%	+11.6%	-6.4%		-7.0%	-12.5%	+5.2%		+4.8%	+6.4%
Ethnic Group	No Response	39	2.2%	72	62	1,385	3.0%	2,316	1,293	40,764	2.8%	66,887	35,384
	Change from last year	+34.5%		+22.0%	+44.2%	+21.0%		+20.3%	+27.6%	+29.9%		+24.7%	+28.3%

Note: Scores are reported when there are five or more exams taken by five or more test-takers.

AP: Exam Participation and Performance (Part 1 of 3)

	'07-'08							'08-'09						
	# of Exams	% of Total	Score of 1	Score of 2	Score of 3	Score of 4	Score of 5	# of Exams	% of Total	Score of 1	Score of 2	Score of 3	Score of 4	Score of 5
Total # of Exams	3,033	100%	352	555	787	772	567	3,202	100%	343	531	795	844	689
Art History % of Total	10	0%	0	1	3	5	1	7	0%	0	2	1	3	1
Art: Studio 2D-Design % of Total	15	0%	0	4	4	3	4	13	0%	0	0	3	7	3
Art: Studio 3D-Design % of Total	0	–	0	0	0	0	0	0	–	0	0	0	0	0
Art: Studio Drawing % of Total	20	1%	0	4	7	6	3	16	0%	0	1	10	3	2
Biology % of Total	213	7%	50	45	48	37	33	243	8%	65	37	54	38	49
Chemistry % of Total	128	4%	39	17	26	13	33	121	4%	50	17	19	18	17
Chinese Language and Culture % of Total	0	–	0	0	0	0	0	0	–	0	0	0	0	0
Computer Science A % of Total	55	2%	35	3	2	6	9	53	2%	12	3	7	13	18
Computer Science AB % of Total	2	0%	–	–	–	–	–	2	0%	–	–	–	–	–
Economics: Macroeconomics % of Total	25	1%	1	5	4	10	5	24	1%	0	5	2	9	8
Economics: Microeconomics % of Total	60	2%	3	3	7	32	15	53	2%	2	4	14	18	15
English Language & Composition % of Total	178	6%	3	35	50	45	45	203	6%	7	21	46	68	61
English Literature & Composition % of Total	413	14%	12	86	155	130	30	360	11%	4	67	125	116	48
Environmental Science % of Total	47	2%	11	10	11	14	1	123	4%	24	30	31	28	10

Note: Scores are reported when there are five or more exams.

AP: Exam Participation and Performance (Part 2 of 3)

	'07-'08							'08-'09						
	# of Exams	% of Total	Score of 1	Score of 2	Score of 3	Score of 4	Score of 5	# of Exams	% of Total	Score of 1	Score of 2	Score of 3	Score of 4	Score of 5
French Language % of Total	30	1%	17 57%	5 17%	7 23%	0 0%	1 3%	42	1%	15 36%	13 31%	13 31%	1 2%	0 0%
French Literature % of Total	0	–	0 –	0 –	0 –	0 –	0 –	0	–	0 –	0 –	0 –	0 –	0 –
German Language % of Total	9	0%	0 0%	2 22%	2 22%	3 33%	2 22%	11	0%	0 0%	2 18%	6 55%	2 18%	1 9%
Government & Politics: Comparative % of Total	13	0%	1 8%	9 69%	0 0%	1 8%	2 15%	19	1%	2 11%	5 26%	6 32%	4 21%	2 11%
Government & Politics: United States % of Total	250	8%	8 3%	49 20%	75 30%	52 21%	66 26%	401	13%	9 2%	62 15%	119 30%	117 29%	94 23%
History: European % of Total	117	4%	6 5%	12 10%	44 38%	34 29%	21 18%	108	3%	2 2%	5 5%	34 31%	39 36%	28 26%
History: United States % of Total	486	16%	53 11%	128 26%	133 27%	123 25%	49 10%	352	11%	34 10%	81 23%	72 20%	100 28%	65 18%
History: World % of Total	42	1%	2 5%	13 31%	9 21%	11 26%	7 17%	56	2%	0 0%	11 20%	23 41%	14 25%	8 14%
Human Geography % of Total	19	1%	0 0%	2 11%	6 32%	7 37%	4 21%	20	1%	2 10%	4 20%	4 20%	7 35%	3 15%
Italian % of Total	0	–	0 –	0 –	0 –	0 –	0 –	0	–	0 –	0 –	0 –	0 –	0 –
Japanese Language and Culture % of Total	2	0%	– –	– –	– –	– –	– –	0	–	0 –	0 –	0 –	0 –	0 –
Latin: Literature % of Total	0	–	0 –	0 –	0 –	0 –	0 –	19	1%	3 16%	12 63%	2 11%	2 11%	0 0%
Latin: Vergil % of Total	19	1%	3 16%	1 5%	6 32%	5 26%	4 21%	5	0%	2 40%	1 20%	2 40%	0 0%	0 0%
Mathematics: Calculus AB % of Total	277	9%	49 18%	31 11%	57 21%	56 20%	84 30%	256	8%	41 16%	46 18%	53 21%	60 23%	56 22%
Mathematics: Calculus BC % of Total	69	2%	8 12%	8 12%	12 17%	15 22%	26 38%	89	3%	5 6%	10 11%	21 24%	21 24%	32 36%

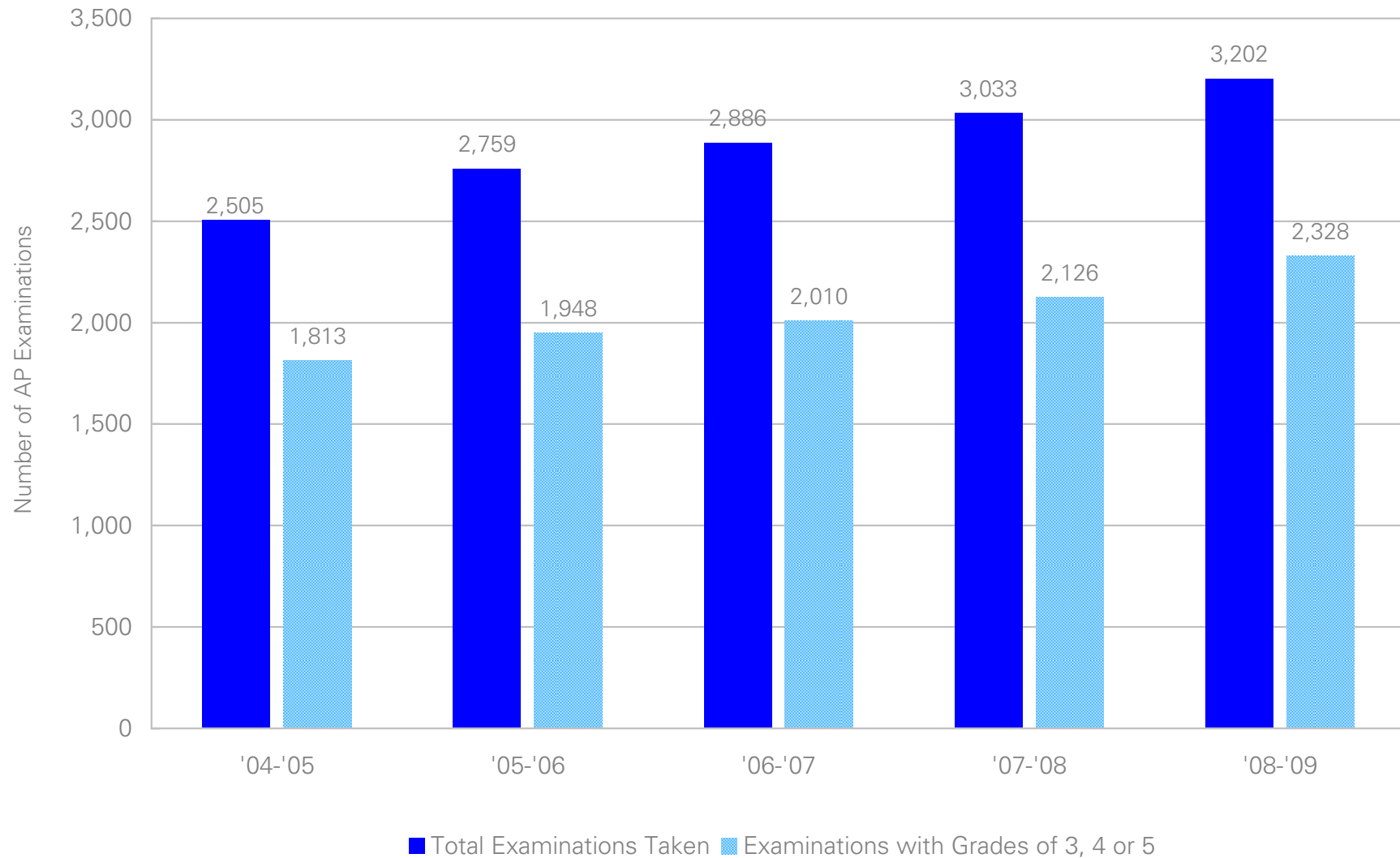
Note: Scores are reported when there are five or more exams.

AP: Exam Participation and Performance (Part 3 of 3)

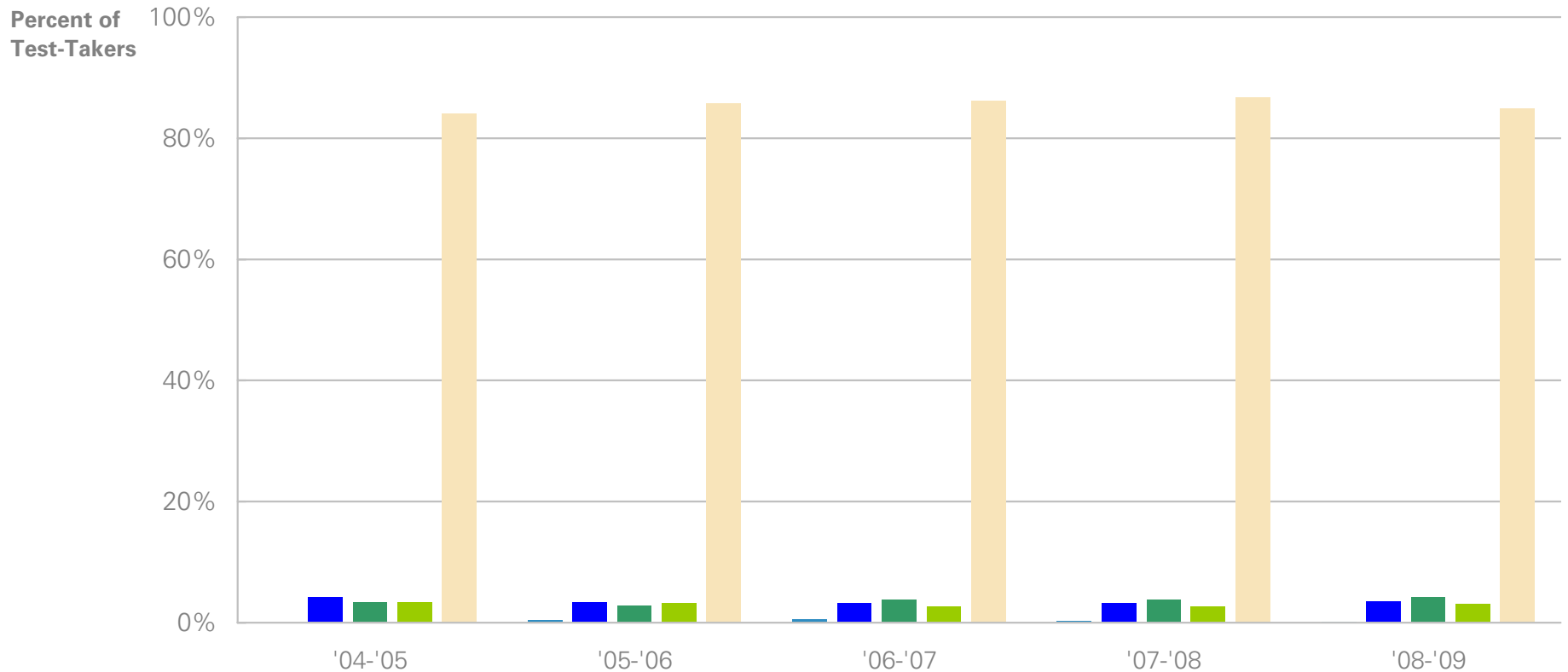
	'07-'08					'08-'09								
	# of Exams	% of Total	Score of 1	Score of 2	Score of 3	Score of 4	Score of 5	# of Exams	% of Total	Score of 1	Score of 2	Score of 3	Score of 4	Score of 5
Music: Theory % of Total	18	1%	0 0%	5 28%	3 17%	10 56%	0 0%	19	1%	1 5%	9 47%	6 32%	1 5%	2 11%
Physics B % of Total	40	1%	4 10%	1 3%	9 23%	8 20%	18 45%	61	2%	4 7%	10 16%	9 15%	11 18%	27 44%
Physics C: Electricity & Magnetism % of Total	24	1%	0 0%	1 4%	4 17%	8 33%	11 46%	9	0%	0 0%	0 0%	0 0%	3 33%	6 67%
Physics C: Mechanics % of Total	47	2%	1 2%	10 21%	12 26%	15 32%	9 19%	21	1%	2 10%	3 14%	2 10%	12 57%	2 10%
Psychology % of Total	185	6%	9 5%	22 12%	33 18%	70 38%	51 28%	239	7%	5 2%	23 10%	42 18%	71 30%	98 41%
Spanish Language % of Total	107	4%	19 18%	15 14%	24 22%	27 25%	22 21%	106	3%	21 20%	18 17%	27 25%	28 26%	12 11%
Spanish Literature % of Total	3	0%	– –	– –	– –	– –	– –	17	1%	2 12%	2 12%	3 18%	6 35%	4 24%
Statistics % of Total	110	4%	17 15%	27 25%	31 28%	24 22%	11 10%	134	4%	29 22%	27 20%	39 29%	24 18%	15 11%

Note: Scores are reported when there are five or more exams.

AP: Number of Examinations and Number of Examinations with Grades of 3, 4 or 5



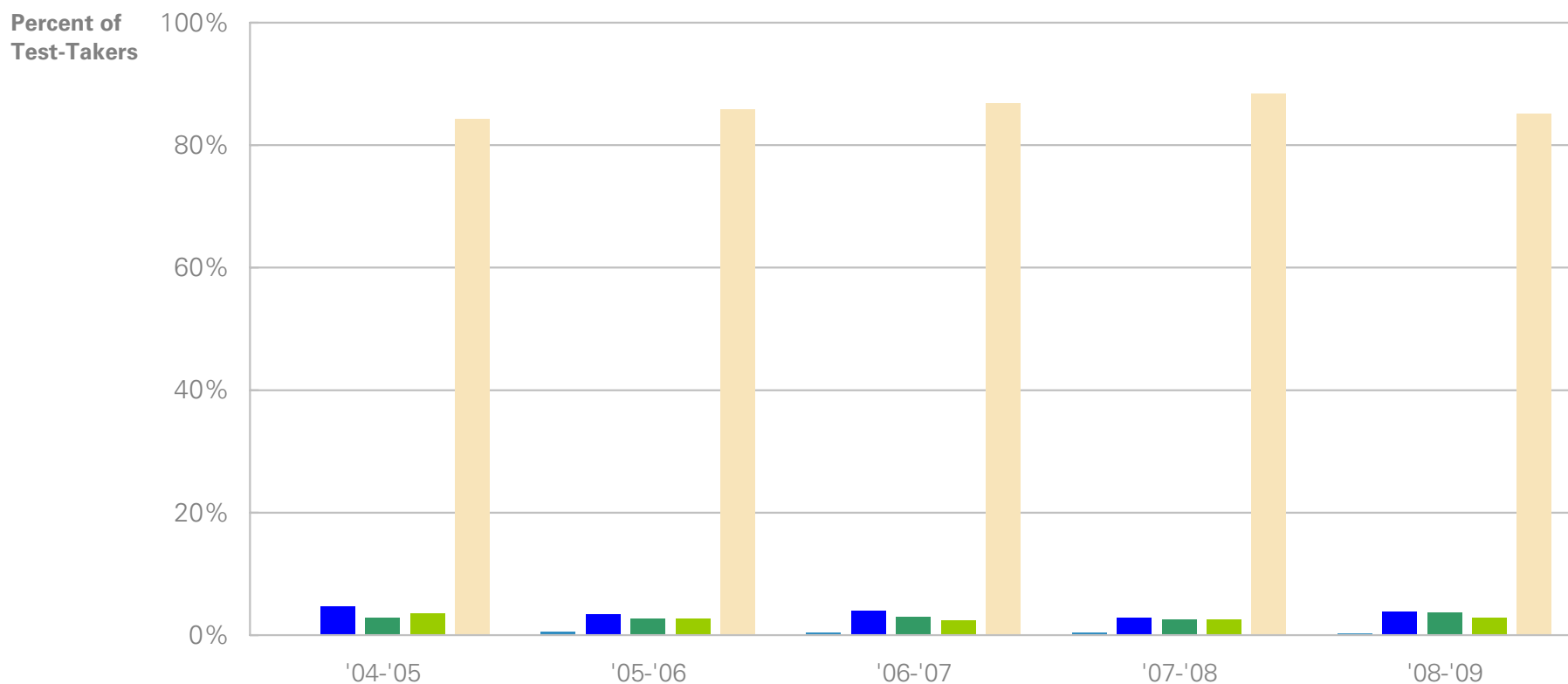
AP: Participation by Ethnic Groups Taking One or More Exam



Number of Students Taking One or More AP Exam:

American Indian	1	7	10	4	3
Asian	63	53	54	54	63
Black	51	44	62	65	75
Hispanic	50	49	44	45	55
White	1,245	1,342	1,432	1,491	1,511
Other	30	37	27	31	35
No Response	41	32	33	29	39
Total	1,481	1,564	1,662	1,719	1,781

AP: Participation by Ethnic Groups with Grades 3, 4 or 5



Number of Students With Grades 3, 4 or 5 on an AP Exam:

American Indian	0	5	4	4	3
Asian	51	39	48	36	51
Black	31	30	36	31	49
Hispanic	39	30	29	32	37
White	928	980	1,045	1,100	1,155
Other	24	31	20	22	28
No Response	28	28	21	20	33
Total	1,101	1,143	1,203	1,245	1,356

District Integrated Summary 2008-2009

Archdiocese of Baltimore Education Office



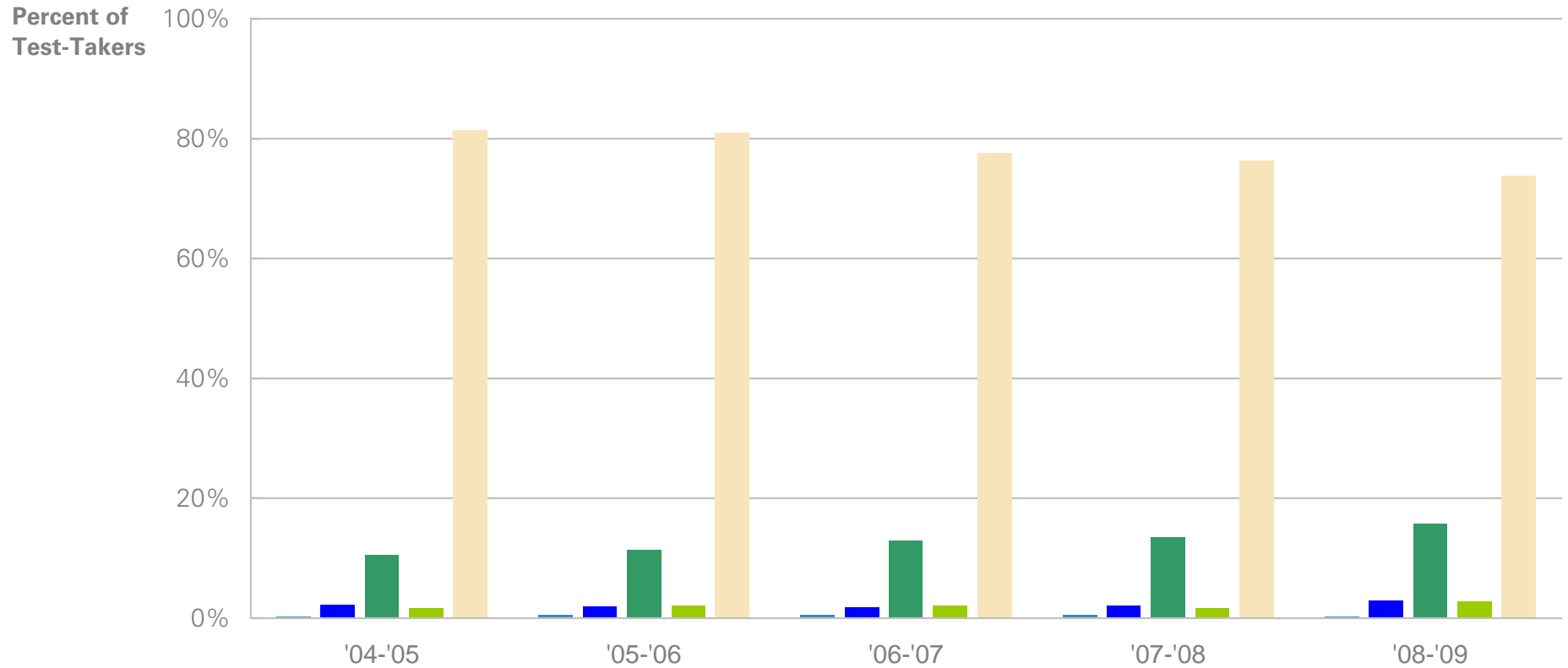
PSAT/NMSQT: Sophomore Performance and Participation Overview

	Archdiocese of Baltimore Education Office					Maryland- Public Schools					Total Group - Public Schools				
	# of Test-Takers	% of Total	Mean Critical Reading	Mean Mathematics	Mean Writing	# of Test-Takers	% of Total	Mean Critical Reading	Mean Mathematics	Mean Writing	# of Test-Takers	% of Total	Mean Critical Reading	Mean Mathematics	Mean Writing
All															
Total	2,375	100.0%	45.8	45.7	45.1	54,771	100.0%	39.6	42.5	39.1	1,309,539	100.0%	40.7	43.3	40.1
Change from last year	-0.1%		-0.2	+1.2	-0.9	-2.0%		-0.1	+1.5	+0.1	+8.7%		-0.3	+0.8	-0.1
Gender															
Female	1,191	50.1%	46.8	44.9	46.9	27,511	50.2%	40.3	42.0	40.4	680,102	51.9%	41.3	42.7	41.1
Change from last year	-8.0%		-0.1	+1.6	-0.7	-2.0%		-0.4	+1.7	-0.1	+7.5%		-0.4	+0.9	-0.3
Male	1,170	49.3%	44.8	46.5	43.3	26,541	48.5%	38.8	43.1	38.0	617,513	47.2%	40.1	44.1	39.0
Change from last year	+8.1%		-0.1	+0.7	-0.8	-3.7%		-0.1	+1.3	+0.4	+8.8%		0.0	+0.9	+0.1
Ethnic Group															
American Indian	6	0.3%	46.8	49.2	46.7	411	0.8%	36.8	39.5	36.1	10,503	0.8%	38.0	40.4	37.0
Change from last year	-53.8%		+3.3	+7.0	+5.5	+3.3%		+1.0	+2.4	+1.0	+23.0%		-0.9	+0.5	-0.7
Asian	69	2.9%	45.8	49.7	44.4	3,300	6.0%	45.3	50.8	44.6	93,244	7.1%	45.0	50.1	44.1
Change from last year	+40.8%		-3.8	-1.1	-4.6	+3.5%		-0.2	+0.5	+0.1	+8.6%		0.0	+0.2	+0.1
Black	373	15.7%	37.9	37.5	37.2	18,020	32.9%	34.8	37.0	35.2	236,211	18.0%	35.1	37.2	35.3
Change from last year	+16.2%		-2.2	+0.9	-2.5	+1.6%		-0.4	+1.7	+0.2	+8.1%		-0.5	+1.1	-0.1
Hispanic Overall	64	2.7%	43.6	44.5	42.9	4,030	7.4%	36.0	38.8	36.2	270,005	20.6%	35.9	38.7	36.1
Change from last year	+60.0%		-0.8	+0.8	-0.8	+5.9%		-0.3	+1.5	+0.4	+13.0%		-0.2	+1.1	+0.4
<i>Mexican American</i>	14	0.6%	39.1	42.1	39.1	607	1.1%	35.7	38.6	35.7	120,089	9.2%	35.9	38.9	36.4
Change from last year	+180.0%		-8.5	-5.1	-9.3	+9.6%		-0.3	+1.2	+0.5	+16.9%		-0.2	+1.1	+0.6
<i>Puerto Rican</i>	11	0.5%	45.7	48.3	47.5	342	0.6%	37.3	40.1	37.2	24,710	1.9%	35.8	38.0	35.4
Change from last year	+37.5%		+2.3	+7.5	+6.0	+4.3%		-1.0	+1.2	-0.3	+5.7%		-0.4	+0.9	+0.1
<i>Other Hispanic</i>	39	1.6%	44.6	44.4	43.0	3,081	5.6%	35.9	38.7	36.2	125,206	9.6%	36.0	38.6	36.1
Change from last year	+44.4%		+0.5	+0.5	-0.4	+5.3%		-0.2	+1.6	+0.5	+10.9%		-0.1	+1.0	+0.5
White	1,753	73.8%	47.6	47.4	47.0	24,415	44.6%	43.4	46.6	42.3	592,608	45.3%	45.1	47.4	43.7
Change from last year	-3.4%		+0.6	+1.7	-0.1	-6.4%		+0.4	+1.8	+0.4	+6.6%		0.0	+0.8	-0.3
Other	40	1.7%	42.6	41.5	41.1	1,929	3.5%	39.5	41.3	39.0	48,214	3.7%	40.1	42.1	39.4
Change from last year	-16.7%		-2.5	-0.9	-3.0	-5.0%		-1.1	+0.2	-0.8	+10.9%		-0.3	+0.7	-0.2
No Response	70	2.9%	45.9	46.2	44.9	2,666	4.9%	35.4	38.3	35.4	58,754	4.5%	35.2	38.1	35.4
Change from last year	-23.9%		-0.4	+0.3	-1.6	+0.9%		-1.2	+0.7	-0.8	+8.6%		-0.8	+0.6	+0.1

PSAT/NMSQT: Junior Performance and Participation Overview

	Archdiocese of Baltimore Education Office					Maryland- Public Schools					Total Group - Public Schools					
	# of Test-Takers	% of Total	Mean Critical Reading	Mean Mathematics	Mean Writing	# of Test-Takers	% of Total	Mean Critical Reading	Mean Mathematics	Mean Writing	# of Test-Takers	% of Total	Mean Critical Reading	Mean Mathematics	Mean Writing	
All	Total	2,580	100.0%	49.7	50.0	49.3	43,529	100.0%	43.5	45.9	43.4	1,296,514	100.0%	45.9	48.2	45.0
	Change from last year	-1.2%		0.0	+0.8	0.0	+2.8%		-0.5	+0.9	-0.1	+1.9%		-0.2	+0.5	-0.1
Gender	Female	1,258	48.8%	50.3	48.6	50.9	22,335	51.3%	44.0	44.9	44.4	701,014	54.1%	46.1	47.1	45.7
	Change from last year	+4.5%		-0.1	+1.0	0.0	+0.2%		-0.7	+0.7	-0.3	+0.9%		-0.3	+0.6	-0.1
Gender	Male	1,318	51.1%	49.0	51.3	47.7	20,800	47.8%	43.1	46.9	42.4	588,732	45.4%	45.8	49.7	44.2
	Change from last year	-6.1%		-0.2	+0.8	-0.1	+4.5%		-0.2	+0.9	+0.3	+2.4%		+0.1	+0.5	0.0
Ethnic Group	American Indian	10	0.4%	45.7	48.9	42.4	277	0.6%	40.6	42.7	40.3	9,296	0.7%	44.2	46.0	42.6
	Change from last year	-16.7%		-4.5	-1.7	-3.4	+6.5%		-1.0	+0.8	-0.9	+1.6%		+0.1	+1.0	+0.1
Ethnic Group	Asian	58	2.2%	52.6	55.4	52.2	3,112	7.1%	49.6	54.9	49.4	99,307	7.7%	49.1	54.3	48.5
	Change from last year	+16.0%		+1.2	+2.6	+1.8	+7.6%		-0.3	-0.3	+0.5	+5.4%		+0.3	0.0	+0.5
Ethnic Group	Black	323	12.5%	43.1	41.7	42.4	14,483	33.3%	37.6	39.1	38.0	177,964	13.7%	38.6	40.0	38.5
	Change from last year	+3.2%		+1.4	+1.9	+0.3	+4.3%		-0.6	+1.3	-0.1	+5.3%		-0.5	+0.7	-0.2
Ethnic Group	Hispanic Overall	70	2.7%	49.8	49.2	48.5	3,365	7.7%	39.2	41.4	39.6	204,616	15.8%	40.1	42.5	40.2
	Change from last year	0.0%		-0.3	0.0	-0.7	+13.4%		-0.6	+1.0	+0.1	+8.7%		-0.1	+0.7	+0.6
Ethnic Group	<i>Mexican American</i>	8	0.3%	54.0	54.9	54.8	423	1.0%	39.7	41.4	39.9	90,752	7.0%	40.5	43.1	40.8
	Change from last year	-50.0%		+5.6	+3.4	+6.7	+20.5%		-0.6	+0.9	+0.6	+8.1%		+0.1	+0.9	+0.9
Ethnic Group	<i>Puerto Rican</i>	14	0.5%	48.0	46.6	49.1	236	0.5%	42.4	44.5	42.1	19,220	1.5%	39.9	41.6	39.0
	Change from last year	+40.0%		-2.8	+2.3	+0.7	-8.5%		-1.5	+0.4	-1.6	+7.8%		-0.3	+0.6	-0.1
Ethnic Group	<i>Other Hispanic</i>	48	1.9%	49.7	49.0	47.3	2,706	6.2%	38.9	41.1	39.3	94,644	7.3%	39.8	42.1	39.8
	Change from last year	+9.1%		-0.8	-0.4	-2.5	+14.7%		-0.4	+1.1	+0.3	+9.5%		-0.2	+0.6	+0.4
Ethnic Group	White	2,030	78.7%	50.7	51.2	50.4	19,201	44.1%	48.2	50.8	47.6	727,160	56.1%	49.3	51.4	47.8
	Change from last year	-1.1%		-0.1	+0.7	+0.1	-0.6%		-0.1	+0.9	+0.1	-1.4%		+0.2	+0.7	-0.1
Ethnic Group	Other	42	1.6%	50.4	48.8	48.9	1,597	3.7%	43.4	44.9	43.3	43,066	3.3%	45.1	46.8	44.1
	Change from last year	-26.3%		+1.7	+0.3	+2.3	+1.5%		-1.6	-0.2	-0.7	+4.5%		-0.6	+0.2	-0.5
Ethnic Group	No Response	47	1.8%	47.9	49.0	46.4	1,494	3.4%	38.4	40.5	38.6	35,105	2.7%	40.0	42.2	39.5
	Change from last year	-16.1%		-5.3	-3.6	-6.6	+5.1%		-0.6	+0.9	+0.1	+4.1%		-1.0	0.0	-0.5

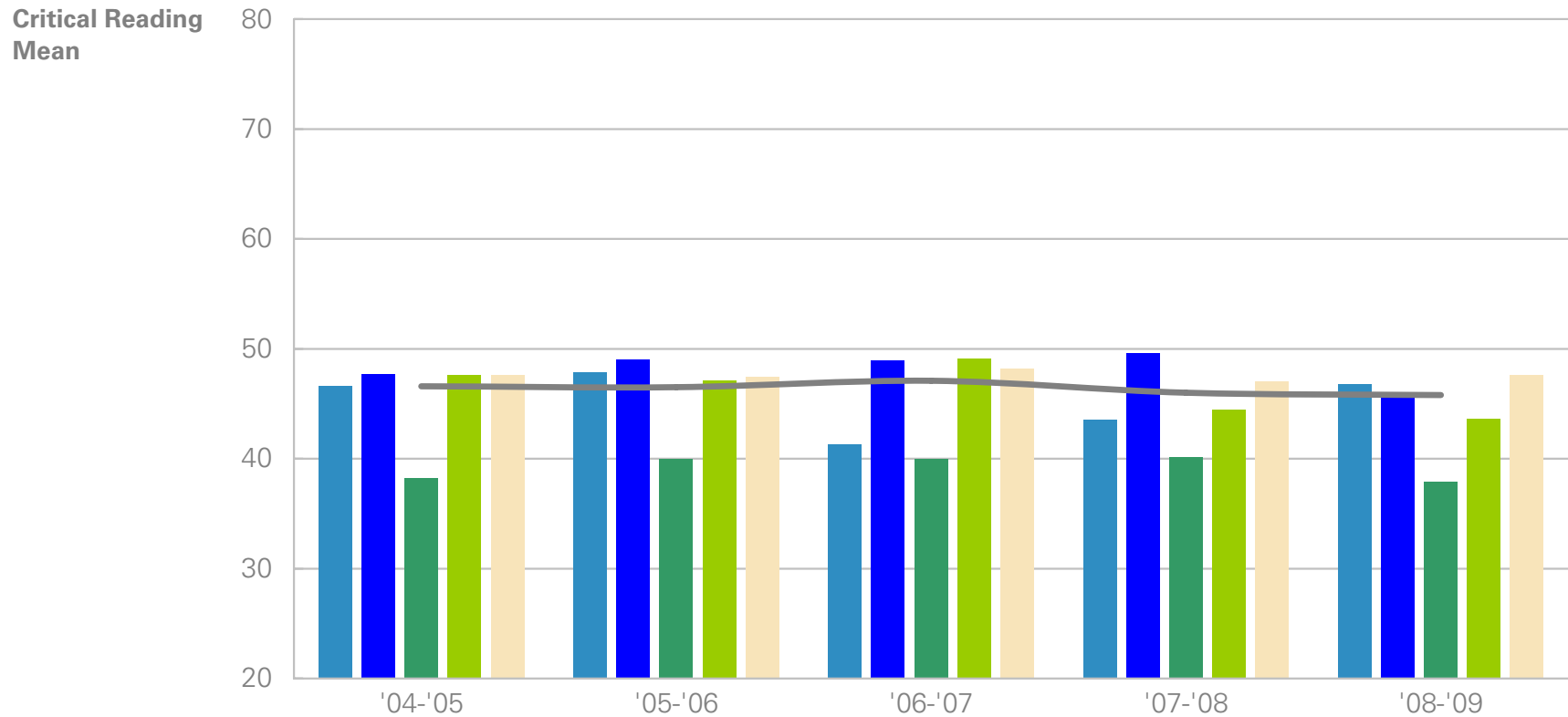
PSAT/NMSQT: Sophomore Participation by Ethnic Group



Number of Sophomores Taking the PSAT/NMSQT:

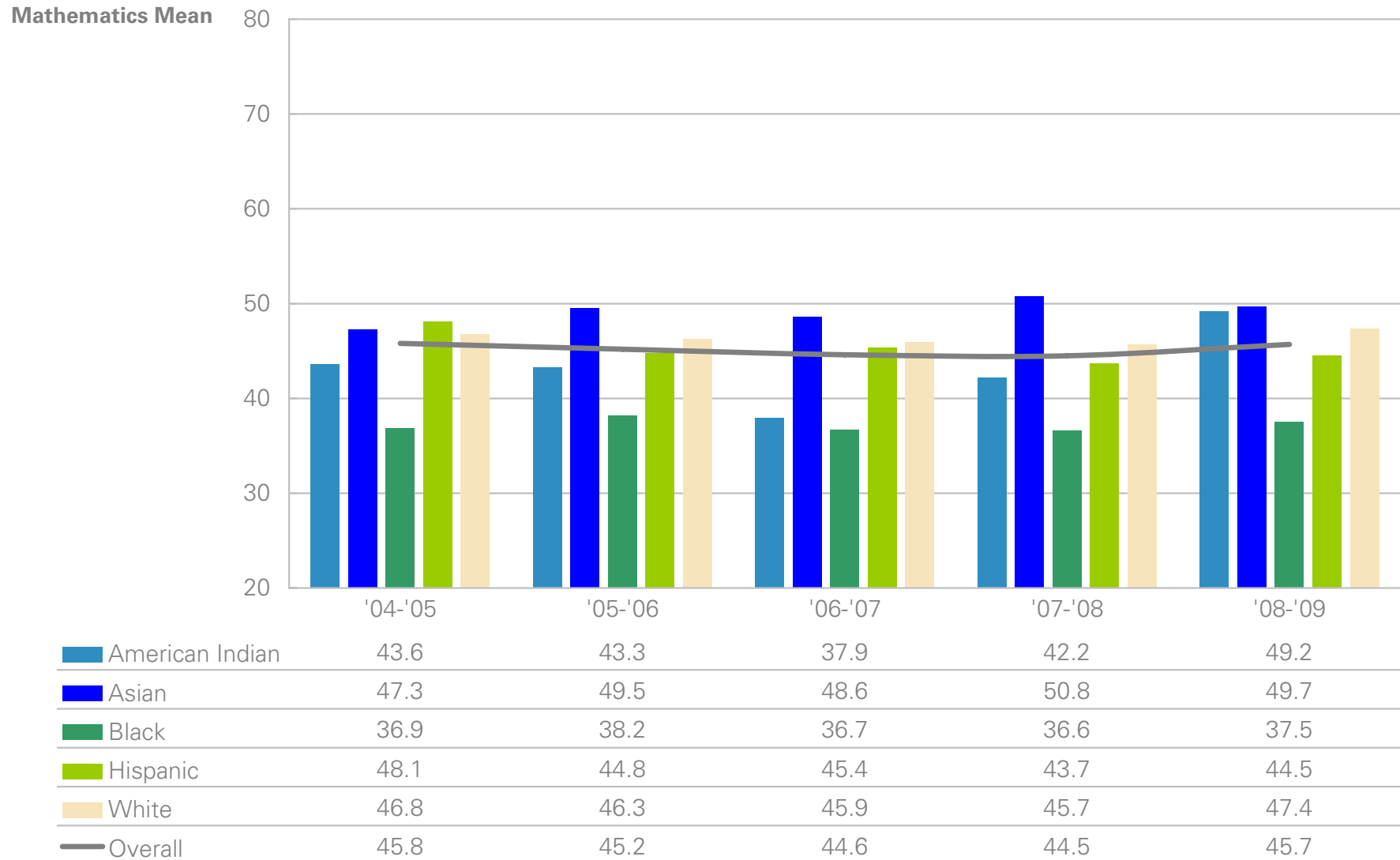
American Indian	5	11	10	13	6
Asian	49	44	40	49	69
Black	232	272	297	321	373
Hispanic	36	48	48	40	64
White	1,800	1,935	1,778	1,814	1,753
Other	37	53	52	48	40
No Response	52	28	68	92	70
Total	2,211	2,391	2,293	2,377	2,375

PSAT/NMSQT: Sophomore Critical Reading Performance by Ethnic Group

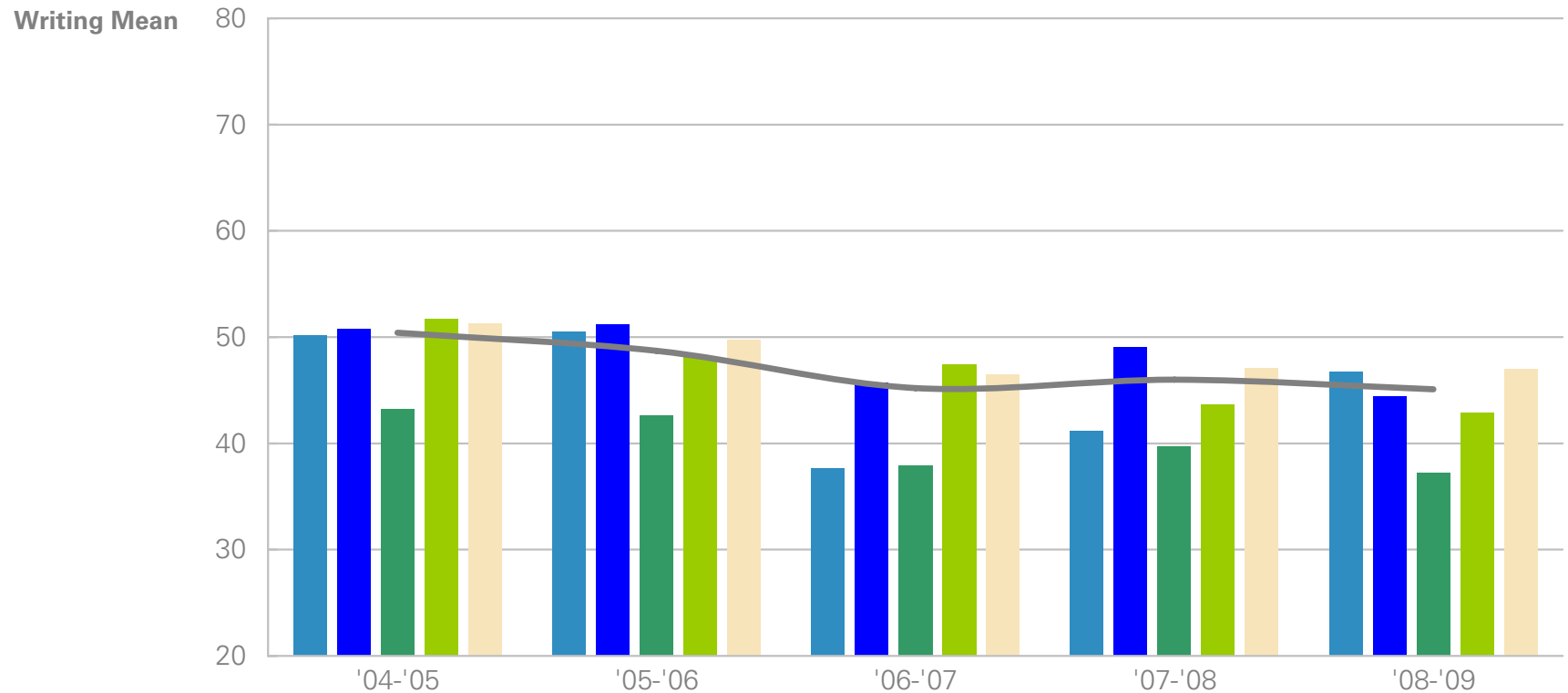


	'04-'05	'05-'06	'06-'07	'07-'08	'08-'09
American Indian	46.6	47.8	41.3	43.5	46.8
Asian	47.7	49.0	48.9	49.6	45.8
Black	38.2	40.0	40.0	40.1	37.9
Hispanic	47.6	47.1	49.1	44.4	43.6
White	47.6	47.4	48.2	47.0	47.6
Overall	46.6	46.5	47.1	46.0	45.8

PSAT/NMSQT: Sophomore Mathematics Performance by Ethnic Group

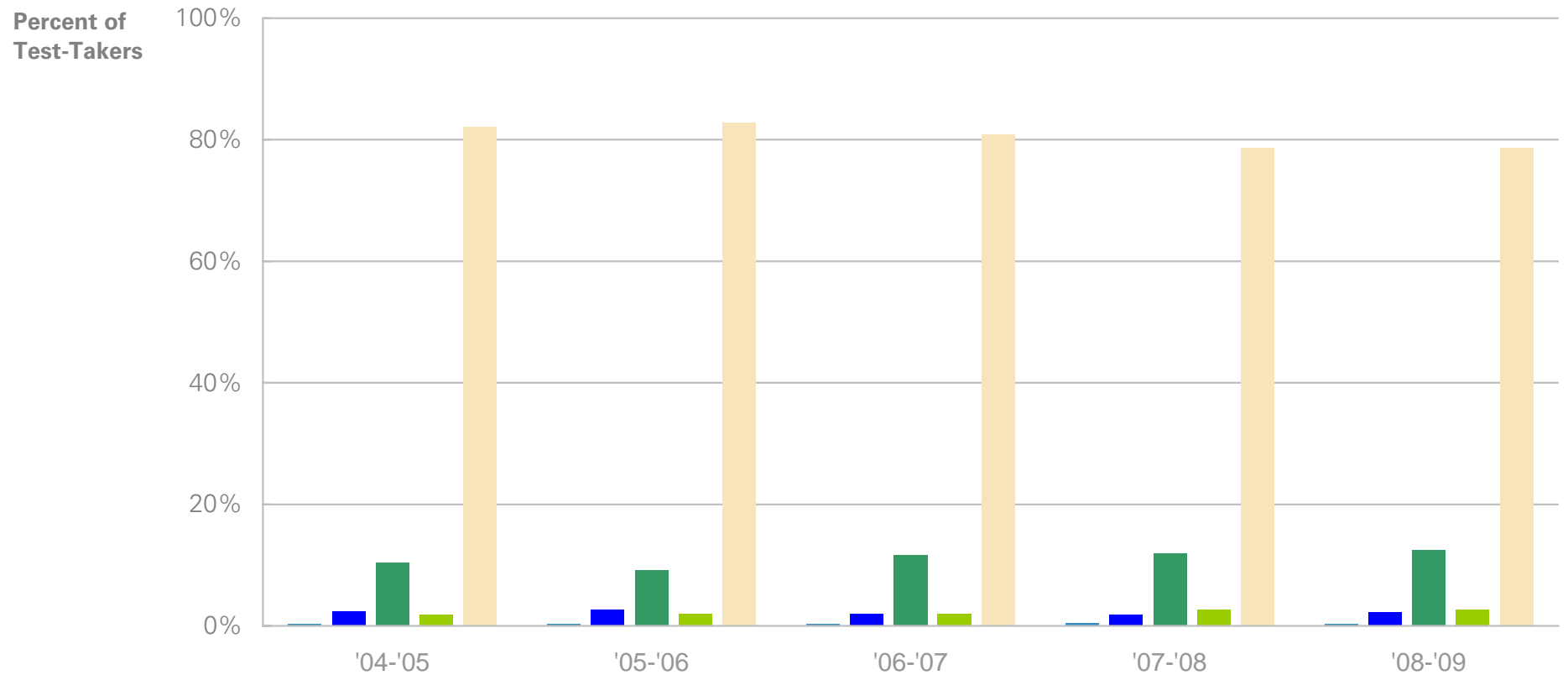


PSAT/NMSQT: Sophomore Writing Performance by Ethnic Group



	'04-'05	'05-'06	'06-'07	'07-'08	'08-'09
American Indian	50.2	50.5	37.7	41.2	46.7
Asian	50.8	51.2	45.7	49.0	44.4
Black	43.2	42.6	37.9	39.7	37.2
Hispanic	51.7	48.1	47.4	43.7	42.9
White	51.3	49.7	46.5	47.1	47.0
Overall	50.4	48.7	45.2	46.0	45.1

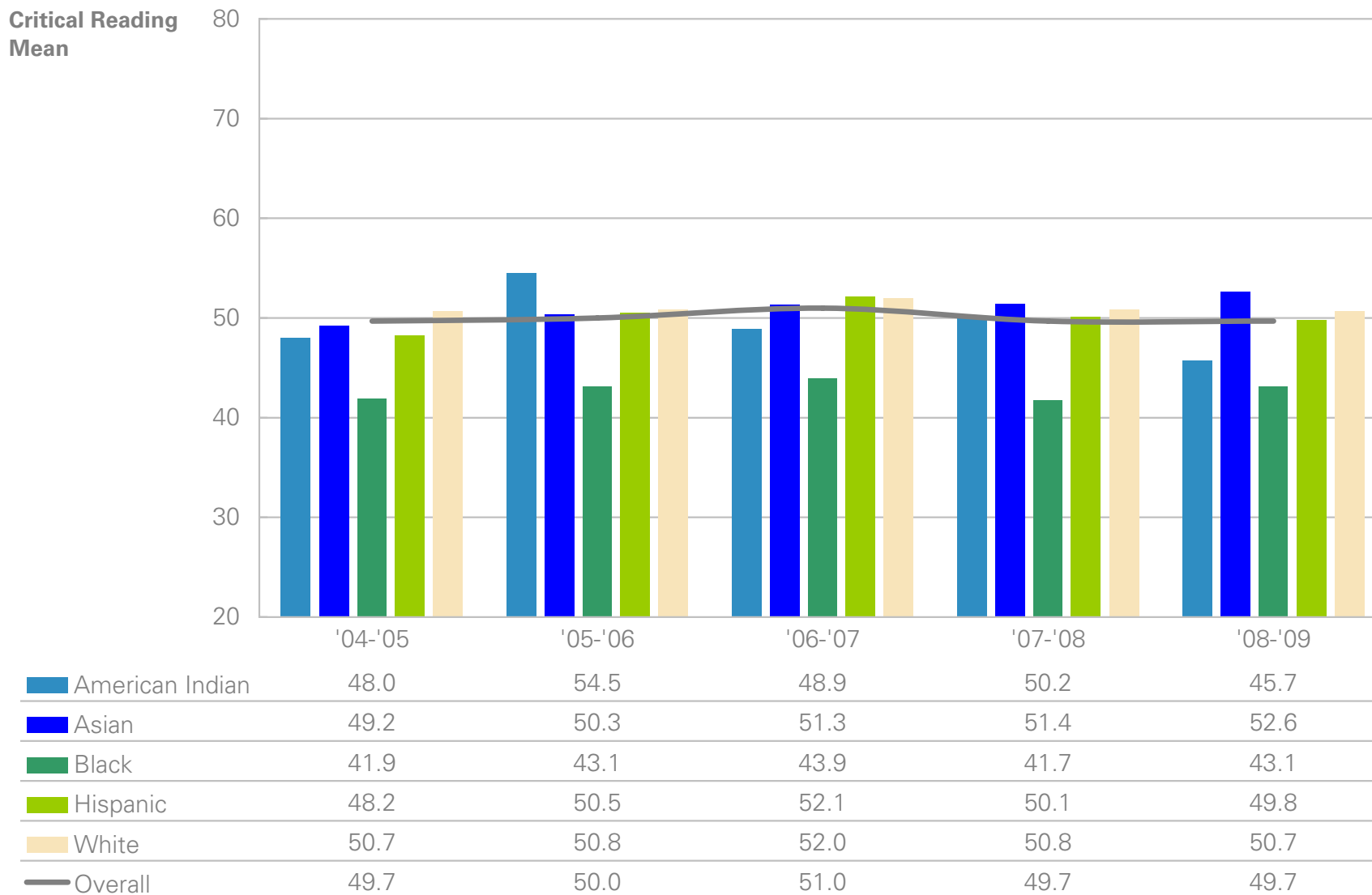
PSAT/NMSQT: Junior Participation by Ethnic Group



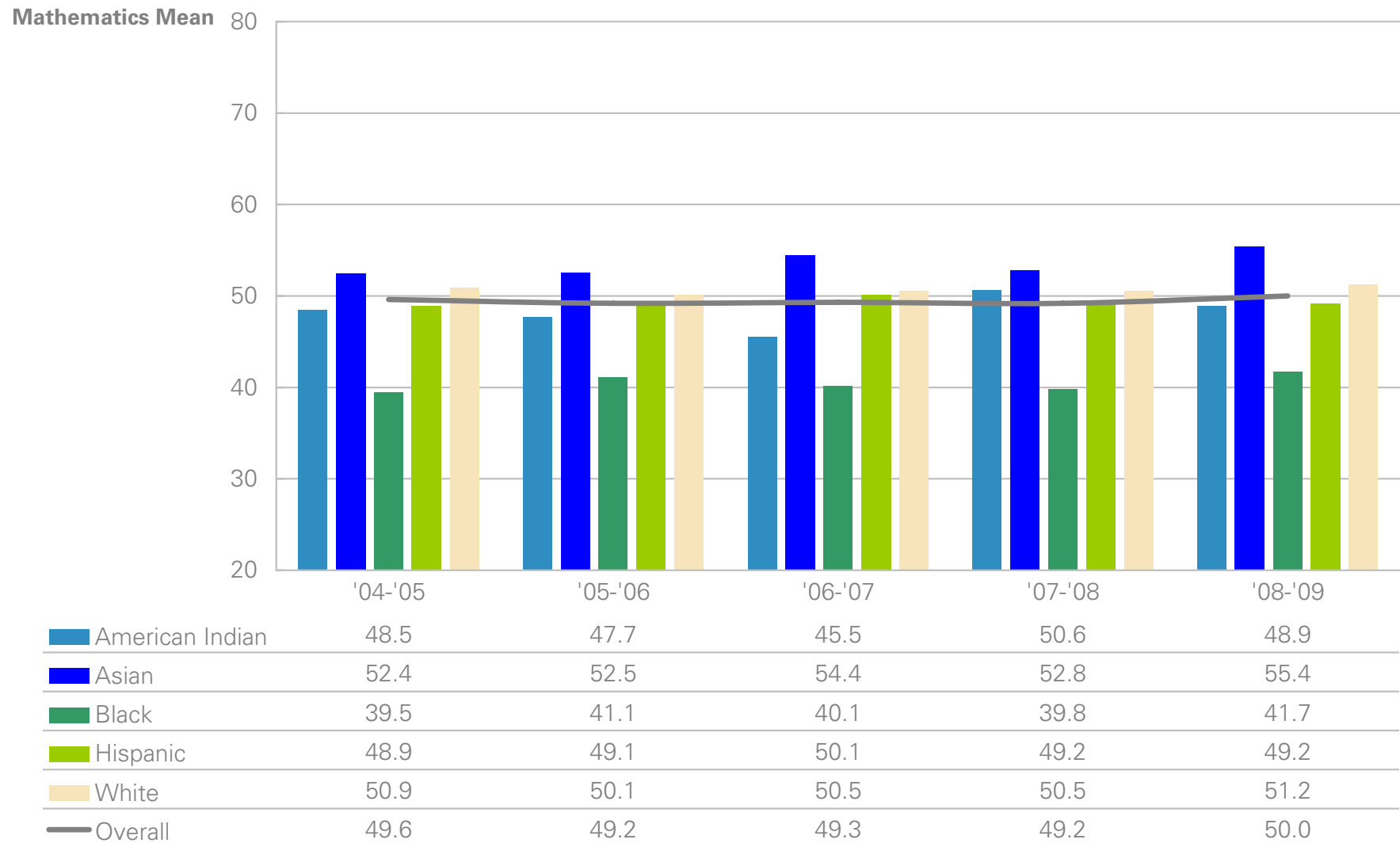
Number of Juniors Taking the PSAT/NMSQT:

American Indian	8	10	11	12	10
Asian	63	70	53	50	58
Black	268	244	308	313	323
Hispanic	46	54	54	70	70
White	2,100	2,192	2,131	2,053	2,030
Other	50	44	42	57	42
No Response	21	30	33	56	47
Total	2,556	2,644	2,632	2,611	2,580

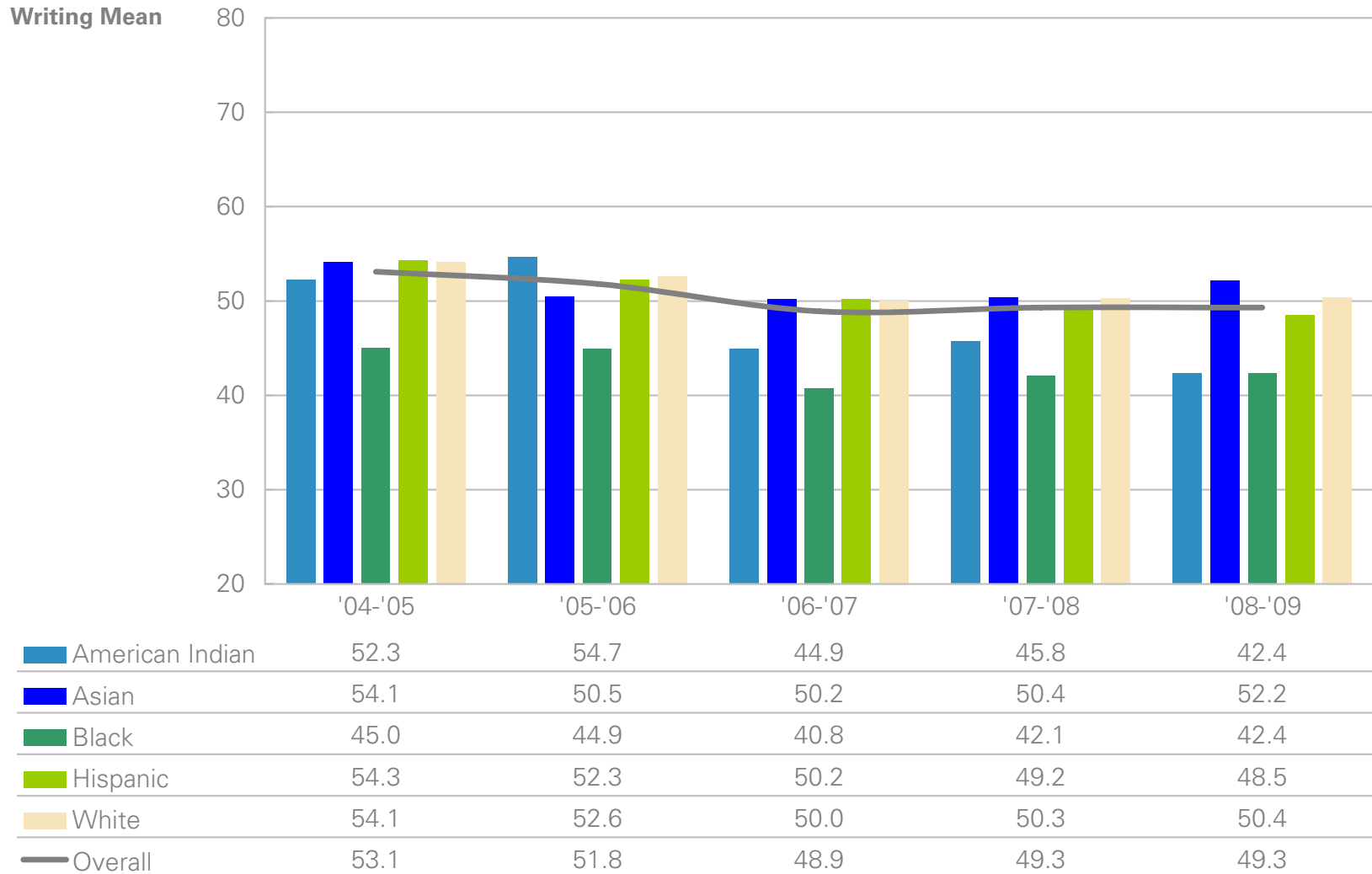
PSAT/NMSQT: Junior Critical Reading Performance by Ethnic Group



PSAT/NMSQT: Junior Mathematics Performance by Ethnic Group



PSAT/NMSQT: Junior Writing Performance by Ethnic Group



Data Notes

Participation. Test-takers who have valid scores.

Graduating Seniors. High school seniors who have indicated that they will be graduating in the reported academic year. All SAT takers in the 2009 graduating class took the writing section. 2006 through 2008 graduates include some students who tested prior to March 2005 and did not take the writing section. Writing scores are not reported for 2005 graduates.

SAT-Takers. Please note that statistical information about SAT and SAT Subject Test takers is based on a year's graduating seniors. This means that all statistical summaries are based on the most recent SAT and all SAT Subject Test scores of these graduating seniors.

Self-Reported Ethnic Group. When test-takers register for the SAT, they complete an optional registration form called the SAT Questionnaire. This questionnaire asks students to indicate their ethnic group membership. The groupings provided for this question are American Indian or Alaskan Native; Asian, Asian American, or Pacific Islander; African American or black; Mexican or Mexican American; Puerto Rican; Latin American, South American, Central American, or other Hispanic or Latino; white; and Other. A small percentage of students indicate "Other" or do not provide a response.

Hispanic Ethnic Group. Students who indicated Mexican or Mexican American; Puerto Rican; Other Hispanic, Latino, or Latin American are combined into Hispanic.

Minority Group. Students who indicated any ethnic group other than White and provided a response were counted in this group.

PSAT/NMSQT and AP Takers. PSAT/NMSQT and AP tests are administered once a year. Statistical summaries for each year are based on a snapshot of all test-takers for that year's administration.

PSAT/NMSQT. The PSAT/NMSQT is administered each October to high school students. The PSAT/NMSQT has a critical reading, mathematics, and writing section.

Number of PSAT/NMSQT Takers. Please note that this report counts a test-taker only if the student has a critical reading, mathematics **and** writing score.

Change from Last Year. The change from last year for frequency data (number of test-takers or exams) is represented as a percent change. It is obtained by subtracting the previous year's total from the current year and then dividing this difference by the previous year's total, which is then multiplied by 100. Change in mean score from last year is represented by the actual change in scale score. It is calculated by subtracting the previous year's mean score from that of the current year.

Number of SAT takers by PSAT/NMSQT Participation. Based on self reported data obtained from the SAT Questionnaire.

Mean Score. Only reported when there are five or more test-takers.

Core Academic Preparation. SAT takers who have taken four or more years of English, three or more years of math, three or more years of natural sciences, and three or more years of social sciences and history based on self-reported answers to the SAT Questionnaire.

Non-Core Academic Preparation. SAT takers who have NOT taken four or more years of English, three or more years of math, three or more years of natural sciences, and three or more years of social sciences and history based on self-reported answers to the SAT Questionnaire.
